

Product datasheet for **TA344517**

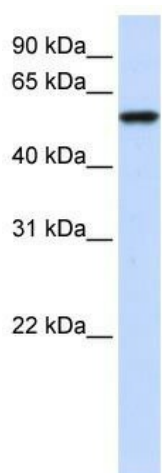
ZNF675 Rabbit Polyclonal Antibody

Product data:

Product Type:	Primary Antibodies
Applications:	WB
Recommended Dilution:	WB
Reactivity:	Human
Host:	Rabbit
Isotype:	IgG
Clonality:	Polyclonal
Immunogen:	The immunogen for anti-ZNF675 antibody: synthetic peptide directed towards the N terminal of human ZNF675. Synthetic peptide located within the following region: CDKYVKVFNKFSHSDRHKIKHMENKPFKCKEGRSFCMLSHLTRHERNYT
Formulation:	Liquid. Purified antibody supplied in 1x PBS buffer with 0.09% (w/v) sodium azide and 2% sucrose.
Purification:	Affinity Purified
Conjugation:	Unconjugated
Storage:	Store at -20°C as received.
Stability:	Stable for 12 months from date of receipt.
Predicted Protein Size:	66 kDa
Gene Name:	zinc finger protein 675
Database Link:	NP_612203 Entrez Gene 171392 Human Q8TD23
Background:	ZNF675 may be involved in transcriptional regulation. It may play a role during osteoclast differentiation by modulating TRAF6 signaling activity.
Synonyms:	TBZF; TIZ
Note:	Immunogen Sequence Homology: Human: 100%
Protein Families:	Transcription Factors



[View online »](#)

Product images:

WB Suggested Anti-ZNF675 Antibody Titration:
0.2-1 ug/ml; ELISA Titer: 1:62500; Positive Control:
Human brain