

Product datasheet for **TA344515**

EVX1 Rabbit Polyclonal Antibody

Product data:

Product Type:	Primary Antibodies
Applications:	WB
Recommended Dilution:	WB
Reactivity:	Human
Host:	Rabbit
Isotype:	IgG
Clonality:	Polyclonal
Immunogen:	The immunogen for anti-EVX1 antibody: synthetic peptide directed towards the N terminal of human EVX1. Synthetic peptide located within the following region: PEPPEKMOVPRGCLSPRAVPPATRERGGGGPEEEPVDGLAGSAAGPGAEPQ
Formulation:	Liquid. Purified antibody supplied in 1x PBS buffer with 0.09% (w/v) sodium azide and 2% sucrose. <i>Note that this product is shipped as lyophilized powder to China customers.</i>
Purification:	Affinity Purified
Conjugation:	Unconjugated
Storage:	Store at -20°C as received.
Stability:	Stable for 12 months from date of receipt.
Predicted Protein Size:	42 kDa
Gene Name:	even-skipped homeobox 1
Database Link:	NP_001980 Entrez Gene 2128 Human P49640



[View online »](#)

Background:

EVX1 is a member of the even-skipped homeobox family characterized by the presence of a homeodomain closely related to the *Drosophila* even-skipped (*eve*) segmentation gene of the pair-rule class. The protein may play an important role as a transcriptional repressor during embryogenesis. This gene encodes a member of the even-skipped homeobox family characterized by the presence of a homeodomain closely related to the *Drosophila* even-skipped (*eve*) segmentation gene of the pair-rule class. The encoded protein may play an important role as a transcriptional repressor during embryogenesis. PRIMARYREFSEQ_SPAN PRIMARY_IDENTIFIER PRIMARY_SPAN COMP 1-343 AC004080.2 115915-116257 344-1717 X60655.1 86-1459 1718-1858 AC004080.2 119803-119943

Synonyms:

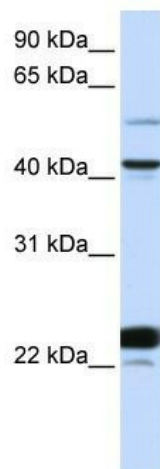
EVX-1

Note:

Immunogen Sequence Homology: Human: 100%; Horse: 93%; Rabbit: 92%; Dog: 86%; Pig: 86%; Bovine: 86%; Guinea pig: 86%; Goat: 80%; Rat: 79%; Mouse: 79%

Protein Families:

ES Cell Differentiation/IPS

Product images:

WB Suggested Anti-EVX1 Antibody Titration: 0.2-1 ug/ml; ELISA Titer: 1:312500; Positive Control: HeLa cell lysate