

Product datasheet for **TA344514**

EVX1 Rabbit Polyclonal Antibody

Product data:

Product Type:	Primary Antibodies
Applications:	WB
Recommended Dilution:	WB
Reactivity:	Human
Host:	Rabbit
Isotype:	IgG
Clonality:	Polyclonal
Immunogen:	The immunogen for anti-EVX1 antibody: synthetic peptide directed towards the middle region of human EVX1. Synthetic peptide located within the following region: GSGSEALVGSPNGGSETPKSNNGSGGGGSQGLACSASDQMRRYRTAFTR
Formulation:	Liquid. Purified antibody supplied in 1x PBS buffer with 0.09% (w/v) sodium azide and 2% sucrose. <i>Note that this product is shipped as lyophilized powder to China customers.</i>
Purification:	Affinity Purified
Conjugation:	Unconjugated
Storage:	Store at -20°C as received.
Stability:	Stable for 12 months from date of receipt.
Predicted Protein Size:	42 kDa
Gene Name:	even-skipped homeobox 1
Database Link:	NP_001980 Entrez Gene 2128 Human P49640



[View online »](#)

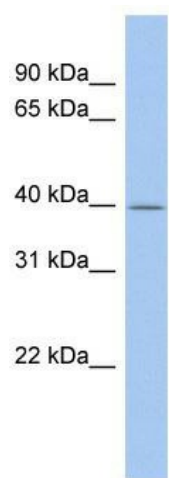
Background: EVX1 is a member of the vertebrate eve-related homeo box family. This protein acts as a transcriptional repressor. A similar protein in mice is critical for early embryogenesis. This gene encodes a member of the even-skipped homeobox family characterized by the presence of a homeodomain closely related to the Drosophila even-skipped (eve) segmentation gene of the pair-rule class. The encoded protein may play an important role as a transcriptional repressor during embryogenesis. PRIMARYREFSEQ_SPAN PRIMARY_IDENTIFIER PRIMARY_SPAN COMP 1-343 AC004080.2 115915-116257 344-1717 X60655.1 86-1459 1718-1858 AC004080.2 119803-119943

Synonyms: EVX-1

Note: Immunogen Sequence Homology: Human: 100%; Horse: 92%; Pig: 86%; Rat: 86%; Guinea pig: 86%; Mouse: 79%; Bovine: 75%

Protein Families: ES Cell Differentiation/IPS

Product images:



WB Suggested Anti-EVX1 Antibody Titration: 0.2-1 ug/ml; ELISA Titer: 1:62500; Positive Control: MCF7 cell lysate