

Product datasheet for **TA344510**

ATF5 Rabbit Polyclonal Antibody

Product data:

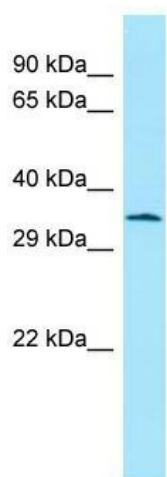
Product Type:	Primary Antibodies
Applications:	WB
Recommended Dilution:	WB
Reactivity:	Rat
Host:	Rabbit
Isotype:	IgG
Clonality:	Polyclonal
Immunogen:	The immunogen for Anti-Atf5 antibody is: synthetic peptide directed towards the C-terminal region of Rat Atf5. Synthetic peptide located within the following region: EGEALGECQGLEARNRELRAESVEREIQYVKDLLIEVYKARSQRTRS
Formulation:	Liquid. Purified antibody supplied in 1x PBS buffer with 0.09% (w/v) sodium azide and 2% sucrose. <i>Note that this product is shipped as lyophilized powder to China customers.</i>
Purification:	Affinity Purified
Conjugation:	Unconjugated
Storage:	Store at -20°C as received.
Stability:	Stable for 12 months from date of receipt.
Predicted Protein Size:	30 kDa
Gene Name:	activating transcription factor 5
Database Link:	NP_036200 Entrez Gene 282840 Rat Q9Y2D1
Background:	Atf5 plays a role in inhibition of nerve growth factor-induced neuronal outgrowth and regulation of neurogenesis.
Synonyms:	ATFX; HMFN0395
Note:	Immunogen Sequence Homology: Human: 100%; Pig: 93%; Rat: 93%; Horse: 93%; Mouse: 93%; Bovine: 93%; Guinea pig: 93%; Zebrafish: 79%



[View online »](#)

Protein Families: Transcription Factors

Product images:



WB Suggested Anti-Atf5 Antibody; Titration: 1.0 ug/ml; Positive Control: Rat Stomach