

Product datasheet for **TA344509**

FBXL11 (KDM2A) Rabbit Polyclonal Antibody

Product data:

| | |
|-------------------------|--|
| Product Type: | Primary Antibodies |
| Applications: | WB |
| Recommended Dilution: | WB |
| Reactivity: | Human |
| Host: | Rabbit |
| Isotype: | IgG |
| Clonality: | Polyclonal |
| Immunogen: | The immunogen for Anti-KDM2A antibody is: synthetic peptide directed towards the middle region of Human KDM2A. Synthetic peptide located within the following region: LTPPADKPGQDNRSKLRNMTDFRLAGLDITDTRLRIIRHMPLLSRLDLS |
| Formulation: | Liquid. Purified antibody supplied in 1x PBS buffer with 0.09% (w/v) sodium azide and 2% sucrose. <i>Note that this product is shipped as lyophilized powder to China customers.</i> |
| Purification: | Affinity Purified |
| Conjugation: | Unconjugated |
| Storage: | Store at -20°C as received. |
| Stability: | Stable for 12 months from date of receipt. |
| Predicted Protein Size: | 68 kDa |
| Gene Name: | lysine demethylase 2A |
| Database Link: | NP_036440 Entrez Gene 22992 Human Q9Y2K7 |



[View online »](#)

Background:

This gene encodes a member of the F-box protein family which is characterized by an approximately 40 amino acid motif, the F-box. The F-box proteins constitute one of the four subunits of ubiquitin protein ligase complex called SCFs (SKP1-cullin-F-box), which function in phosphorylation-dependent ubiquitination. The F-box proteins are divided into 3 classes: Fbws containing WD-40 domains, Fbls containing leucine-rich repeats, and Fbxs containing either different protein-protein interaction modules or no recognizable motifs. The protein encoded by this gene belongs to the Fbls class and, in addition to an F-box, contains at least six highly degenerated leucine-rich repeats. This family member plays a role in epigenetic silencing. It nucleates at CpG islands and specifically demethylates both mono- and di-methylated lysine-36 of histone H3.

Synonyms:

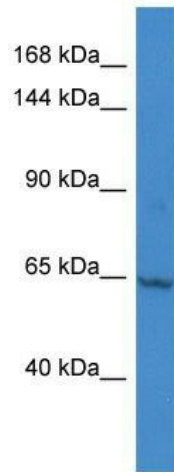
CXXC8; FBL7; FBL11; FBXL11; JHDM1A; LILINA

Note:

Immunogen Sequence Homology: Dog: 100%; Pig: 100%; Horse: 100%; Human: 100%; Bovine: 100%; Rabbit: 100%; Rat: 93%; Mouse: 93%; Guinea pig: 93%

Protein Families:

Druggable Genome, Transcription Factors

Product images:

Host: Rabbit; Target Name: KDM2A; Sample Tissue: HepG2 Whole cell lysates; Antibody Dilution: 1.0 ug/ml