

Product datasheet for **TA344504**

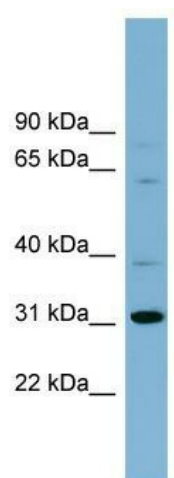
HS747E2A (C22orf31) Rabbit Polyclonal Antibody

Product data:

Product Type:	Primary Antibodies
Applications:	WB
Recommended Dilution:	WB
Reactivity:	Human
Host:	Rabbit
Isotype:	IgG
Clonality:	Polyclonal
Immunogen:	The immunogen for anti-C22orf31 antibody: synthetic peptide directed towards the N terminal of human C22orf31. Synthetic peptide located within the following region: ASSFSLVKLVLRRLKKNKCCPPPCFKGEGKLSKRLKHKDDSVMKATQQAR
Formulation:	Liquid. Purified antibody supplied in 1x PBS buffer with 0.09% (w/v) sodium azide and 2% sucrose. <i>Note that this product is shipped as lyophilized powder to China customers.</i>
Purification:	Affinity Purified
Conjugation:	Unconjugated
Storage:	Store at -20°C as received.
Stability:	Stable for 12 months from date of receipt.
Predicted Protein Size:	33 kDa
Gene Name:	chromosome 22 open reading frame 31
Database Link:	NP_056185 Entrez Gene 25770 Human O95567
Background:	The function of this protein remains unknown.
Synonyms:	bK747E2.1; HS747E2A
Note:	Immunogen Sequence Homology: Human: 100%



[View online »](#)

Product images:

WB Suggested Anti-C22orf31 Antibody Titration:
0.2-1 ug/ml; ELISA Titer: 1:312500; Positive
Control: Human Spleen