

## Product datasheet for **TA344503**

### POU2F3 Rabbit Polyclonal Antibody

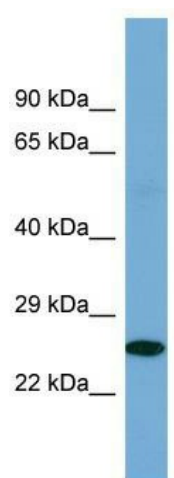
#### Product data:

Product Type:	Primary Antibodies
Applications:	WB
Recommended Dilution:	WB
Reactivity:	Human
Host:	Rabbit
Isotype:	IgG
Clonality:	Polyclonal
Immunogen:	The immunogen for Anti-POU2F3 antibody is: synthetic peptide directed towards the C-terminal region of Human POU2F3. Synthetic peptide located within the following region: LSVPPVHSTMPGTVTSSCSPGNNSRPSSPGSLHASSPTASQNNKAAVN
Formulation:	Liquid. Purified antibody supplied in 1x PBS buffer with 0.09% (w/v) sodium azide and 2% sucrose. <i>Note that this product is shipped as lyophilized powder to China customers.</i>
Purification:	Affinity Purified
Conjugation:	Unconjugated
Storage:	Store at -20°C as received.
Stability:	Stable for 12 months from date of receipt.
Predicted Protein Size:	24 kDa
Gene Name:	POU class 2 homeobox 3
Database Link:	<a href="#">NP_055167</a> <a href="#">Entrez Gene 25833 Human</a> <a href="#">Q9UKI9</a>
Background:	The function of this protein remains unknown.
Synonyms:	Epoc-1; OCT-11; OCT11; OTF-11; PLA-1; PLA1; Skn-1a
Note:	Immunogen Sequence Homology: Rat: 100%; Horse: 100%; Human: 100%; Mouse: 100%; Rabbit: 100%; Pig: 93%; Sheep: 93%; Guinea pig: 93%; Bovine: 92%



[View online »](#)

## Product images:



Host: Rabbit; Target Name: POU2F3; Sample  
Tissue: Fetal Kidney lysates; Antibody Dilution: 1.0  
ug/ml