

## Product datasheet for **TA344502**

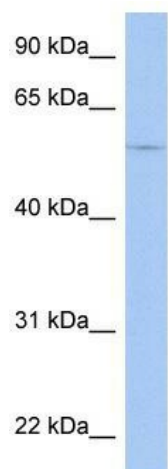
### TRIM58 Rabbit Polyclonal Antibody

#### Product data:

Product Type:	Primary Antibodies
Applications:	WB
Recommended Dilution:	WB
Reactivity:	Human
Host:	Rabbit
Isotype:	IgG
Clonality:	Polyclonal
Immunogen:	The immunogen for anti-TRIM58 antibody: synthetic peptide directed towards the middle region of human TRIM58. Synthetic peptide located within the following region: FNQLFSGLLRPYFFICDATPLILPPTTIAGSGNWASRDHLDPASDVRDDH
Formulation:	Liquid. Purified antibody supplied in 1x PBS buffer with 0.09% (w/v) sodium azide and 2% sucrose. <i>Note that this product is shipped as lyophilized powder to China customers.</i>
Purification:	Affinity Purified
Conjugation:	Unconjugated
Storage:	Store at -20°C as received.
Stability:	Stable for 12 months from date of receipt.
Predicted Protein Size:	55 kDa
Gene Name:	tripartite motif containing 58
Database Link:	<a href="#">NP_056246</a> <a href="#">Entrez Gene 25893 Human</a> <a href="#">Q8NG06</a>
Background:	The specific function of the protein remains unknown.
Synonyms:	BIA2
Note:	Immunogen Sequence Homology: Human: 100%
Protein Families:	Druggable Genome



[View online »](#)

**Product images:**

WB Suggested Anti-TRIM58 Antibody Titration:  
0.2-1 ug/ml; ELISA Titer: 1:12500; Positive Control:  
HepG2 cell lysate