

Product datasheet for **TA344498**

KLF15 Rabbit Polyclonal Antibody

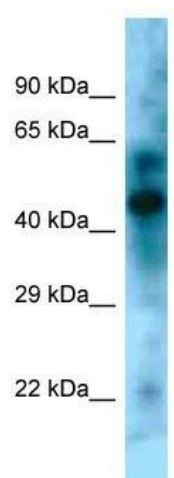
Product data:

Product Type:	Primary Antibodies
Applications:	WB
Recommended Dilution:	WB
Reactivity:	Mouse
Host:	Rabbit
Isotype:	IgG
Clonality:	Polyclonal
Immunogen:	The immunogen for Anti-Klf15 antibody is: synthetic peptide directed towards the N-terminal region of Klf15. Synthetic peptide located within the following region: MVDHLLPVDETFSSPKCSVGYLGDRLASRQPYHMLPSPISEDSDVSSPC
Formulation:	Liquid. Purified antibody supplied in 1x PBS buffer with 0.09% (w/v) sodium azide and 2% sucrose. <i>Note that this product is shipped as lyophilized powder to China customers.</i>
Purification:	Affinity Purified
Conjugation:	Unconjugated
Storage:	Store at -20°C as received.
Stability:	Stable for 12 months from date of receipt.
Predicted Protein Size:	44 kDa
Gene Name:	Kruppel-like factor 15
Database Link:	NP_054798 Entrez Gene 66277 Mouse Q9UIH9
Background:	The function of this protein remains unknown.
Synonyms:	KKLF
Note:	Immunogen Sequence Homology: Rat: 100%; Human: 100%; Dog: 93%; Pig: 93%; Mouse: 93%; Guinea pig: 93%; Bovine: 92%; Horse: 91%
Protein Families:	Transcription Factors



[View online »](#)

Product images:



WB Suggested Anti-Klf15 Antibody; Titration: 1.0 ug/ml; Positive Control: Mouse Brain