

Product datasheet for **TA344494**

Hex (HHEX) Rabbit Polyclonal Antibody

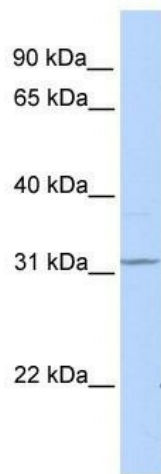
Product data:

Product Type:	Primary Antibodies
Applications:	WB
Recommended Dilution:	WB
Reactivity:	Human
Host:	Rabbit
Isotype:	IgG
Clonality:	Polyclonal
Immunogen:	The immunogen for anti-HHEX antibody: synthetic peptide directed towards the C terminal of human HHEX. Synthetic peptide located within the following region: DQRQDLPSEQNKGASLDSSQCSPSPASQEDLESEISEDSDQEVDIEGDKS
Formulation:	Liquid. Purified antibody supplied in 1x PBS buffer with 0.09% (w/v) sodium azide and 2% sucrose. <i>Note that this product is shipped as lyophilized powder to China customers.</i>
Purification:	Affinity Purified
Conjugation:	Unconjugated
Storage:	Store at -20°C as received.
Stability:	Stable for 12 months from date of receipt.
Predicted Protein Size:	30 kDa
Gene Name:	hematopoietically expressed homeobox
Database Link:	NP_002720 Entrez Gene 3087 Human Q03014



[View online »](#)

Background:	HHEX is a member of the homeobox family of transcription factors, many of which are involved in developmental processes. Expression in specific hematopoietic lineages suggests that this protein may play a role in hematopoietic differentiation. This gene encodes a member of the homeobox family of transcription factors, many of which are involved in developmental processes. Expression in specific hematopoietic lineages suggests that this protein may play a role in hematopoietic differentiation. Publication Note: This RefSeq record includes a subset of the publications that are available for this gene. Please see the Entrez Gene record to access additional publications.
Synonyms:	HEX; HMPH; HOX11L-PEN; PRH; PRHX
Note:	Immunogen Sequence Homology: Pig: 100%; Human: 100%; Dog: 93%; Rat: 93%; Horse: 93%; Mouse: 86%; Bovine: 86%; Guinea pig: 85%
Protein Families:	Druggable Genome, Transcription Factors
Protein Pathways:	Maturity onset diabetes of the young
Product images:	



WB Suggested Anti-HHEX Antibody Titration: 0.2-1 ug/ml; ELISA Titer: 1:62500; Positive Control: 293T cell lysate HHEX is supported by BioGPS gene expression data to be expressed in HEK293T