

Product datasheet for **TA344491**

ZBTB48 Rabbit Polyclonal Antibody

Product data:

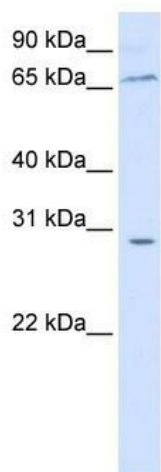
Product Type:	Primary Antibodies
Applications:	WB
Recommended Dilution:	WB
Reactivity:	Human
Host:	Rabbit
Isotype:	IgG
Clonality:	Polyclonal
Immunogen:	The immunogen for anti-ZBTB48 antibody: synthetic peptide directed towards the N terminal of human ZBTB48. Synthetic peptide located within the following region: EPAGLEEEVSRTLGLVPRDQEPRGSHSPQRQLHSPAQSEGSSLCGKL
Formulation:	Liquid. Purified antibody supplied in 1x PBS buffer with 0.09% (w/v) sodium azide and 2% sucrose.
Purification:	Affinity Purified
Conjugation:	Unconjugated
Storage:	Store at -20°C as received.
Stability:	Stable for 12 months from date of receipt.
Predicted Protein Size:	77 kDa
Gene Name:	zinc finger and BTB domain containing 48
Database Link:	NP_005332 Entrez Gene 3104 Human P10074
Background:	ZBTB48 contains 1 BTB (POZ) domain and 11 C2H2-type zinc fingers. It belongs to the krueppel C2H2-type zinc-finger protein family and binds to and regulates the J and/or S elements in MHC II promoter.
Synonyms:	HKR3; pp9964; ZNF855
Note:	Immunogen Sequence Homology: Human: 100%; Dog: 79%; Pig: 79%; Horse: 79%; Rabbit: 79%; Guinea pig: 79%



[View online »](#)

Protein Families: Transcription Factors

Product images:



WB Suggested Anti-ZBTB48 Antibody Titration:
0.2-1 ug/ml; ELISA Titer: 1:312500; Positive
Control: 293T cell lysate ZBTB48 is supported by
BioGPS gene expression data to be expressed in
HEK293T