

Product datasheet for **TA344489**

HLX1 (HLX) Rabbit Polyclonal Antibody

Product data:

Product Type:	Primary Antibodies
Applications:	WB
Recommended Dilution:	WB
Reactivity:	Human
Host:	Rabbit
Isotype:	IgG
Clonality:	Polyclonal
Immunogen:	The immunogen for anti-HLX antibody: synthetic peptide directed towards the middle region of human HLX. Synthetic peptide located within the following region: WFQNRRMKWRHSKEAQAQKDKDKEAGEKPSGGAPAADGEGDERSPSRSEG
Formulation:	Liquid. Purified antibody supplied in 1x PBS buffer with 0.09% (w/v) sodium azide and 2% sucrose. <i>Note that this product is shipped as lyophilized powder to China customers.</i>
Purification:	Affinity Purified
Conjugation:	Unconjugated
Storage:	Store at -20°C as received.
Stability:	Stable for 12 months from date of receipt.
Predicted Protein Size:	51 kDa
Gene Name:	H2.0 like homeobox
Database Link:	NP_068777 Entrez Gene 3142 Human Q14774
Background:	HLX is a transcription factor required for TBX21/T-bet-dependent maturation of Th1 cells as well as maintenance of Th1-specific gene expression. Involved in embryogenesis and hematopoiesis.
Synonyms:	HB24; HLX1

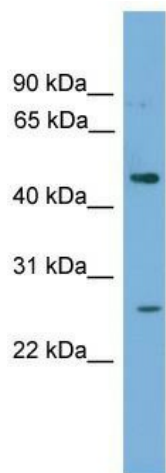


[View online »](#)

Note: Immunogen Sequence Homology: Dog: 100%; Pig: 100%; Rat: 100%; Horse: 100%; Human: 100%; Mouse: 100%; Bovine: 100%; Rabbit: 100%; Guinea pig: 100%; Zebrafish: 93%; Yeast: 75%

Protein Families: Transcription Factors

Product images:



WB Suggested Anti-HLX Antibody Titration: 0.2-1 ug/ml; ELISA Titer: 1:1562500; Positive Control: PANC1 cell lysate