

Product datasheet for **TA344488**

HOXB3 Rabbit Polyclonal Antibody

Product data:

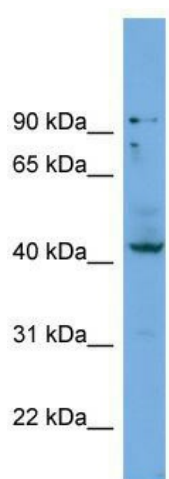
Product Type:	Primary Antibodies
Applications:	WB
Recommended Dilution:	WB
Reactivity:	Human
Host:	Rabbit
Isotype:	IgG
Clonality:	Polyclonal
Immunogen:	The immunogen for anti-HOXB3 antibody: synthetic peptide directed towards the middle region of human HOXB3. Synthetic peptide located within the following region: SGNLDYNGAPPMAPSQHHGPCEPHPTYTDLSSHHAPPPQGRIQEAPKLTH
Formulation:	Liquid. Purified antibody supplied in 1x PBS buffer with 0.09% (w/v) sodium azide and 2% sucrose.
Purification:	Affinity Purified
Conjugation:	Unconjugated
Storage:	Store at -20°C as received.
Stability:	Stable for 12 months from date of receipt.
Predicted Protein Size:	44 kDa
Gene Name:	homeobox B3
Database Link:	NP_002137 Entrez Gene 3213 Human P14651
Background:	HOXB3 belongs to ANTP homeobox family. It is a nuclear protein with a homeobox DNA-binding domain. HOXB3 gene is included in a cluster of homeobox B genes located on chromosome 17. The protein functions as a sequence-specific transcription factor that is involved in development. Increased expression of this gene is associated with a distinct biologic subset of acute myeloid leukemia (AML).
Synonyms:	Hox-2.7; HOX2; HOX2G



[View online »](#)

Note: Immunogen Sequence Homology: Dog: 100%; Pig: 100%; Rat: 100%; Horse: 100%; Human: 100%; Bovine: 100%; Mouse: 93%; Rabbit: 78%

Product images:



WB Suggested Anti-HOXB3 Antibody Titration: 0.2-1 ug/ml; Positive Control: NCI-H226 cell lysate
HOXB3 is supported by BioGPS gene expression data to be expressed in NCIH226