

Product datasheet for **TA344483**

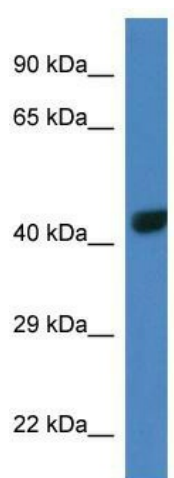
TBX10 Rabbit Polyclonal Antibody

Product data:

Product Type:	Primary Antibodies
Applications:	WB
Recommended Dilution:	WB
Reactivity:	Mouse
Host:	Rabbit
Isotype:	IgG
Clonality:	Polyclonal
Immunogen:	The immunogen for anti-Tbx10 antibody: synthetic peptide corresponding to a region of Mouse. Synthetic peptide located within the following region: FVDPRKDSARYAQENFKSFVTETQFTAVTAYQNHRTQLKIASNPFAKG
Formulation:	Liquid. Purified antibody supplied in 1x PBS buffer with 0.09% (w/v) sodium azide and 2% sucrose.
Purification:	Affinity Purified
Conjugation:	Unconjugated
Storage:	Store at -20°C as received.
Stability:	Stable for 12 months from date of receipt.
Predicted Protein Size:	42 kDa
Gene Name:	T-box 10
Database Link:	NP_005986 Entrez Gene 109575 Mouse O75333
Background:	Tbx10 is a probable transcriptional regulator involved in developmental processes.
Synonyms:	TBX7; TBX13
Note:	Immunogen Sequence Homology: Dog: 100%; Rat: 100%; Human: 100%; Bovine: 100%; Mouse: 93%; Pig: 85%; Horse: 85%; Rabbit: 85%; Guinea pig: 85%; Zebrafish: 77%


[View online »](#)

Product images:



WB Suggested Anti-Tbx10 Antibody; Titration: 1.0 ug/ml; Positive Control: Mouse Liver