

## Product datasheet for **TA344481**

### Nuclear Factor Erythroid Derived 2 (NFE2) Rabbit Polyclonal Antibody

#### Product data:

Product Type:	Primary Antibodies
Applications:	WB
Recommended Dilution:	WB
Reactivity:	Human, Mouse
Host:	Rabbit
Isotype:	IgG
Clonality:	Polyclonal
Immunogen:	The immunogen for anti-NFE2 antibody: synthetic peptide directed towards the middle region of human NFE2. Synthetic peptide located within the following region: KPLSLSGLLSEPLQDPLALLDIGLPAGPPKPQEDPESDSGLSLNYSDAES
Formulation:	Liquid. Purified antibody supplied in 1x PBS buffer with 0.09% (w/v) sodium azide and 2% sucrose. <i>Note that this product is shipped as lyophilized powder to China customers.</i>
Purification:	Affinity Purified
Conjugation:	Unconjugated
Storage:	Store at -20°C as received.
Stability:	Stable for 12 months from date of receipt.
Predicted Protein Size:	41 kDa
Gene Name:	nuclear factor, erythroid 2
Database Link:	<a href="#">NP_006154</a> <a href="#">Entrez Gene 18022 Mouse</a> <a href="#">Entrez Gene 4778 Human</a> <a href="#">Q16621</a>
Background:	NFE2 is required for activity at the locus control region (LCR) upstream of the globin gene complexes. It requires p18 NF-E2 for binding to the NF-E2 motif. NFE2 may play a role in all aspects of hemoglobin production: globin synthesis, heme synthesis, and the procurement of iron.
Synonyms:	NF-E2; p45

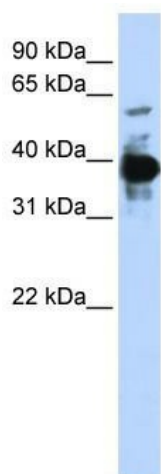


[View online »](#)

**Note:** Immunogen Sequence Homology: Dog: 100%; Horse: 100%; Human: 100%; Rabbit: 100%; Pig: 93%; Rat: 93%; Bovine: 93%; Guinea pig: 93%; Mouse: 92%

**Protein Families:** Transcription Factors

**Product images:**



WB Suggested Anti-NFE2 Antibody Titration: 0.2-1 ug/ml; ELISA Titer: 1:312500; Positive Control: 293T cell lysate