

Product datasheet for **TA344479**

VGLL1 Rabbit Polyclonal Antibody

Product data:

Product Type:	Primary Antibodies
Applications:	WB
Recommended Dilution:	WB
Reactivity:	Human
Host:	Rabbit
Isotype:	IgG
Clonality:	Polyclonal
Immunogen:	The immunogen for anti-VGLL1 antibody: synthetic peptide directed towards the middle region of human VGLL1. Synthetic peptide located within the following region: RPQESAARENGNPGQIAGSTGLLFNLPPGSVHYKKLYVSRGSASTSLPNE
Formulation:	Liquid. Purified antibody supplied in 1x PBS buffer with 0.09% (w/v) sodium azide and 2% sucrose. <i>Note that this product is shipped as lyophilized powder to China customers.</i>
Purification:	Affinity Purified
Conjugation:	Unconjugated
Storage:	Store at -20°C as received.
Stability:	Stable for 12 months from date of receipt.
Predicted Protein Size:	29 kDa
Gene Name:	vestigial like family member 1
Database Link:	NP_057351 Entrez Gene 51442 Human Q99990
Background:	VGLL1 is a specific coactivator for the mammalian TEFs. The mammalian TEF and the Drosophila scalloped genes belong to a conserved family of transcriptional factors that possesses a TEA/ATTS DNA-binding domain. In Drosophila, Scalloped (Sd) interacts with Vestigial (Vg) to form a complex, which binds DNA through the Sd TEA/ATTS domain. The Sd-Vg heterodimer is a key regulator of wing development, which directly controls several target genes and is able to induce wing outgrowth when ectopically expressed.



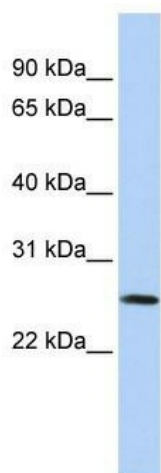
[View online »](#)

Synonyms: TDU; VGL1

Note: Immunogen Sequence Homology: Human: 100%

Protein Families: Transcription Factors

Product images:



WB Suggested Anti-VGLL1 Antibody Titration: 0.2-1 ug/ml; ELISA Titer: 1:312500; Positive Control: Jurkat cell lysate