

Product datasheet for **TA344475**

ZFP37 Rabbit Polyclonal Antibody

Product data:

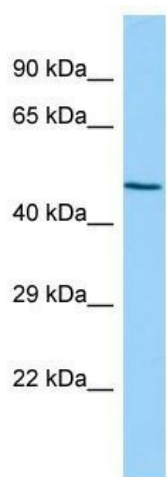
Product Type:	Primary Antibodies
Applications:	WB
Recommended Dilution:	WB
Reactivity:	Rat
Host:	Rabbit
Isotype:	IgG
Clonality:	Polyclonal
Immunogen:	The immunogen for anti-Zfp566 antibody: synthetic peptide directed towards the following sequence YECKECGKAFSSGSNFTQHQRHTGEKPYECKECGNAFSQSSQLIKHQRI. Synthetic peptide located within the following region: YECKECGKAFSSGSNFTQHQRHTGEKPYECKECGNAFSQSSQLIKHQR
Formulation:	Liquid. Purified antibody supplied in 1x PBS buffer with 0.09% (w/v) sodium azide and 2% sucrose. <i>Note that this product is shipped as lyophilized powder to China customers.</i>
Purification:	Affinity Purified
Conjugation:	Unconjugated
Storage:	Store at -20°C as received.
Stability:	Stable for 12 months from date of receipt.
Predicted Protein Size:	45 kDa
Gene Name:	ZFP37 zinc finger protein
Database Link:	NP_003399 Entrez Gene 115768 Rat Q9Y6Q3
Background:	The function of this protein remains unknown.
Synonyms:	zfp-37; ZNF906
Note:	Immunogen Sequence Homology: Rat: 100%; Horse: 100%; Human: 100%; Mouse: 100%; Dog: 93%; Pig: 93%; Bovine: 93%; Rabbit: 93%; Zebrafish: 93%; Guinea pig: 86%



[View online »](#)

Protein Families: Transcription Factors

Product images:



Host: Rabbit; Target Name: Zfp566; Sample Tissue: Rat Spleen lysates; Antibody Dilution: 1.0 ug/ml