

## Product datasheet for **TA344468**

### VMAT1 (SLC18A1) Rabbit Polyclonal Antibody

#### Product data:

Product Type:	Primary Antibodies
Applications:	WB
Recommended Dilution:	WB
Reactivity:	Human
Host:	Rabbit
Isotype:	IgG
Clonality:	Polyclonal
Immunogen:	The immunogen for Anti-SLC18A1 antibody is: synthetic peptide directed towards the N-terminal region of Human SLC18A1. Synthetic peptide located within the following region: FKEVNSSLHLGHAGSSPHALASPAFSTIFSFNNNTVAVEESVPSGIAWM
Formulation:	Liquid. Purified antibody supplied in 1x PBS buffer with 0.09% (w/v) sodium azide and 2% sucrose. <i>Note that this product is shipped as lyophilized powder to China customers.</i>
Purification:	Affinity Purified
Conjugation:	Unconjugated
Storage:	Store at -20°C as received.
Stability:	Stable for 12 months from date of receipt.
Predicted Protein Size:	42 kDa
Gene Name:	solute carrier family 18 member A1
Database Link:	<a href="#">NP_001135797</a> <a href="#">Entrez Gene 6570 Human</a> <a href="#">P54219</a>
Background:	The vesicular monoamine transporter acts to accumulate cytosolic monoamines into vesicles, using the proton gradient maintained across the vesicular membrane. Its proper function is essential to the correct activity of the monoaminergic systems that have been implicated in several human neuropsychiatric disorders. The transporter is a site of action of important drugs, including reserpine and tetrabenazine.
Synonyms:	CGAT; VAT1; VMAT1



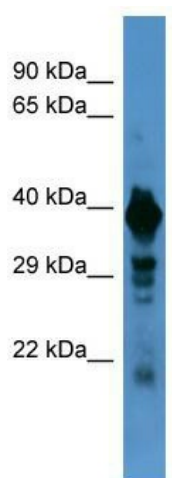
[View online »](#)

**Note:** Immunogen Sequence Homology: Human: 100%; Bovine: 100%; Pig: 92%; Dog: 77%; Horse: 77%

**Protein Families:** Transmembrane

**Protein Pathways:** Parkinson's disease

### Product images:



Host: Rabbit; Target Name: SLC18A1; Sample Tissue: HeLa Whole Cell lysates; Antibody Dilution: 1.0 ug/ml