

Product datasheet for **TA344467**

KLF9 Rabbit Polyclonal Antibody

Product data:

Product Type:	Primary Antibodies
Applications:	WB
Recommended Dilution:	WB
Reactivity:	Human, Rat
Host:	Rabbit
Isotype:	IgG
Clonality:	Polyclonal
Immunogen:	The immunogen for anti-KLF9 antibody: synthetic peptide directed towards the N terminal of human KLF9. Synthetic peptide located within the following region: ARPVSDRTPAPLLLGGPAGTPPGGGALLGLRSLQGTSKPKEPASCLLKE
Formulation:	Liquid. Purified antibody supplied in 1x PBS buffer with 0.09% (w/v) sodium azide and 2% sucrose. <i>Note that this product is shipped as lyophilized powder to China customers.</i>
Purification:	Affinity Purified
Conjugation:	Unconjugated
Storage:	Store at -20°C as received.
Stability:	Stable for 12 months from date of receipt.
Predicted Protein Size:	27 kDa
Gene Name:	Kruppel-like factor 9
Database Link:	NP_001197 Entrez Gene 117560 Rat Entrez Gene 687 Human Q13886



[View online »](#)

Background:

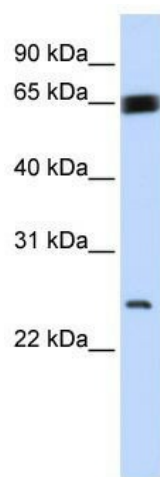
KLF9 is a transcription factor that binds to GC box elements located in the promoter. Binding of the encoded protein to a single GC box inhibits mRNA expression while binding to tandemly repeated GC box elements activates transcription. The protein encoded by this gene is a transcription factor that binds to GC box elements located in the promoter. Binding of the encoded protein to a single GC box inhibits mRNA expression while binding to tandemly repeated GC box elements activates transcription. Publication Note: This RefSeq record includes a subset of the publications that are available for this gene. Please see the Entrez Gene record to access additional publications.

Synonyms:

BTEB; BTEB1

Note:

Immunogen Sequence Homology: Dog: 100%; Pig: 100%; Rat: 100%; Horse: 100%; Human: 100%; Mouse: 100%; Bovine: 100%; Rabbit: 100%; Guinea pig: 100%

Product images:

WB Suggested Anti-KLF9 Antibody Titration: 0.2-1 ug/ml; ELISA Titer: 1:62500; Positive Control: 721_B cell lysate There is BioGPS gene expression data showing that KLF9 is expressed in 721_B