

Product datasheet for **TA344465**

C2orf3 (GCFC2) Rabbit Polyclonal Antibody

Product data:

| | |
|-------------------------|---|
| Product Type: | Primary Antibodies |
| Applications: | WB |
| Recommended Dilution: | WB |
| Reactivity: | Human |
| Host: | Rabbit |
| Isotype: | IgG |
| Clonality: | Polyclonal |
| Immunogen: | The immunogen for anti-C2orf3 antibody: synthetic peptide directed towards the N terminal of human C2orf3. Synthetic peptide located within the following region: SEPDDHEKRIPFTLRPQTLRQRMAEESISRNEETSEESQEDEKQDTWEQQ |
| Formulation: | Liquid. Purified antibody supplied in 1x PBS buffer with 0.09% (w/v) sodium azide and 2% sucrose. <i>Note that this product is shipped as lyophilized powder to China customers.</i> |
| Purification: | Affinity Purified |
| Conjugation: | Unconjugated |
| Storage: | Store at -20°C as received. |
| Stability: | Stable for 12 months from date of receipt. |
| Predicted Protein Size: | 89 kDa |
| Gene Name: | GC-rich sequence DNA-binding factor 2 |
| Database Link: | NP_003194 Entrez Gene 6936 Human P16383 |



[View online »](#)

Background:

The first mRNA transcript isolated for C2orf3 gene was part of an artificial chimera derived from two distinct gene transcripts and a primer used in the cloning process (see Genbank accession M29204). C2orf3 belongs to the GCF family. It is a factor that represses transcription. It binds to the GC-rich sequences (5'-GCGGGGC-3') present in the epidermal growth factor receptor, beta-actin, and calcium-dependent protease promoters. The first mRNA transcript isolated for this gene was part of an artificial chimera derived from two distinct gene transcripts and a primer used in the cloning process (see Genbank accession M29204). A positively charged amino terminus present only in the chimera was determined to bind GC-rich DNA, thus mistakenly thought to identify a transcription factor gene.

Synonyms:

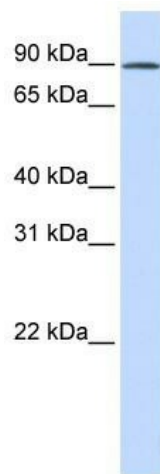
C2orf3; DNABF; GCF; TCF9

Note:

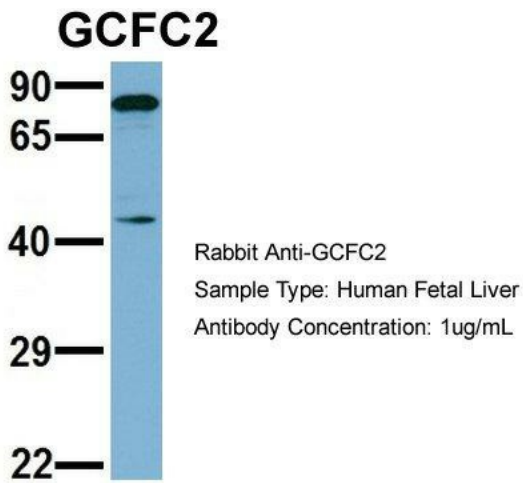
Immunogen Sequence Homology: Dog: 100%; Human: 100%; Pig: 92%; Rat: 92%; Guinea pig: 92%; Horse: 85%; Mouse: 85%; Rabbit: 83%; Bovine: 79%

Protein Families:

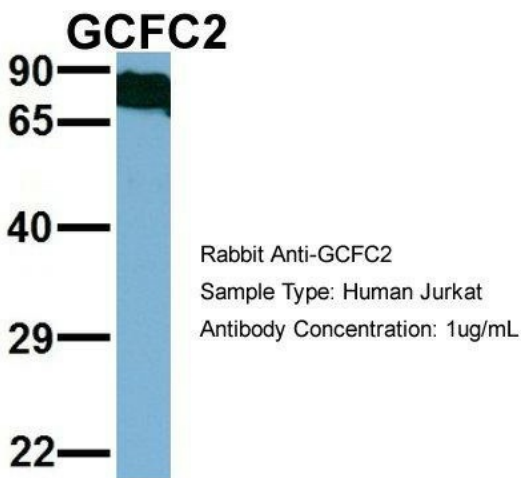
Transcription Factors

Product images:

WB Suggested Anti-C2orf3 Antibody Titration: 0.2-1 ug/ml; ELISA Titer: 1:12500; Positive Control: Human Lung



Host: Rabbit; Target Name: GCFC2; Sample Tissue: Human Fetal Liver; Antibody Dilution: 1.0 ug/ml



Host: Rabbit; Target Name: GCFC2; Sample Tissue: Jurkat; Antibody Dilution: 1.0 ug/ml; GCFC2 is strongly supported by BioGPS gene expression data to be expressed in Human Jurkat cells