

Product datasheet for **TA344464**

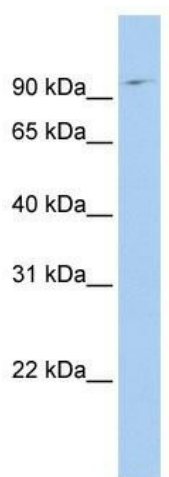
TATA Element Modulatory Factor 1 (TMF1) Rabbit Polyclonal Antibody

Product data:

Product Type:	Primary Antibodies
Applications:	WB
Recommended Dilution:	WB
Reactivity:	Human
Host:	Rabbit
Isotype:	IgG
Clonality:	Polyclonal
Immunogen:	The immunogen for anti-TMF1 antibody: synthetic peptide directed towards the N terminal of human TMF1. Synthetic peptide located within the following region: TPETTESQVKDSSLCVSGETLAAGTSSPKTEGKHEETV NKESDMKVPTVS
Formulation:	Liquid. Purified antibody supplied in 1x PBS buffer with 0.09% (w/v) sodium azide and 2% sucrose.
Purification:	Affinity Purified
Conjugation:	Unconjugated
Storage:	Store at -20°C as received.
Stability:	Stable for 12 months from date of receipt.
Predicted Protein Size:	123 kDa
Gene Name:	TATA element modulatory factor 1
Database Link:	NP_009045 Entrez Gene 7110 Human P82094
Background:	TMF1 binds the HIV-1 TATA element and inhibits transcriptional activation by the TATA-binding protein (TBP).
Synonyms:	ARA160; TMF
Note:	Immunogen Sequence Homology: Pig: 100%; Horse: 100%; Human: 100%; Dog: 86%; Bovine: 86%; Rat: 85%; Guinea pig: 85%
Protein Families:	Transcription Factors



[View online »](#)

Product images:

WB Suggested Anti-TMF1 Antibody Titration: 0.2-1 ug/ml; ELISA Titer: 1:12500; Positive Control: MCF7 cell lysate. There is BioGPS gene expression data showing that TMF1 is expressed in MCF7.