

## Product datasheet for **TA344463**

### USF2 Rabbit Polyclonal Antibody

#### Product data:

Product Type:	Primary Antibodies
Applications:	WB
Recommended Dilution:	WB
Reactivity:	Human
Host:	Rabbit
Isotype:	IgG
Clonality:	Polyclonal
Immunogen:	The immunogen for anti-USF2 antibody: synthetic peptide directed towards the middle region of human USF2. Synthetic peptide located within the following region: AGGQQAVTQVGVDGAAQRPGPAAASVPPGPAAPFPLAVIQNPFSNGGSPA
Formulation:	Liquid. Purified antibody supplied in 1x PBS buffer with 0.09% (w/v) sodium azide and 2% sucrose. <i>Note that this product is shipped as lyophilized powder to China customers.</i>
Purification:	Affinity Purified
Conjugation:	Unconjugated
Storage:	Store at -20°C as received.
Stability:	Stable for 12 months from date of receipt.
Predicted Protein Size:	37 kDa
Gene Name:	upstream transcription factor 2, c-fos interacting
Database Link:	<a href="#">NP_003358</a> <a href="#">Entrez Gene 7392 Human</a> <a href="#">Q15853</a>
Background:	USF2 is a member of the basic helix-loop-helix leucine zipper family, and can function as a cellular transcription factor. It can activate transcription through pyrimidine-rich initiator (Inr) elements and E-box motifs. This gene encodes a member of the basic helix-loop-helix leucine zipper family, and can function as a cellular transcription factor. The encoded protein can activate transcription through pyrimidine-rich initiator (Inr) elements and E-box motifs. Two transcript variants encoding distinct isoforms have been identified for this gene.



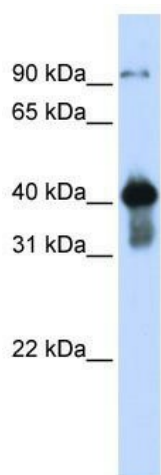
[View online »](#)

**Synonyms:** bHLHb12; FIP

**Note:** Immunogen Sequence Homology: Dog: 100%; Rat: 100%; Human: 100%; Mouse: 100%; Rabbit: 100%; Pig: 93%; Bovine: 93%; Guinea pig: 93%

**Protein Families:** Druggable Genome, Transcription Factors

**Product images:**



WB Suggested Anti-USF2 Antibody Titration: 0.2-1 ug/ml; ELISA Titer: 1:62500; Positive Control: Transfected 293T