

## Product datasheet for **TA344461**

### WNT8B Rabbit Polyclonal Antibody

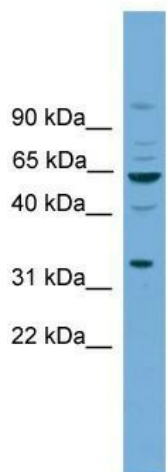
#### Product data:

Product Type:	Primary Antibodies
Applications:	WB
Recommended Dilution:	WB
Reactivity:	Human
Host:	Rabbit
Isotype:	IgG
Clonality:	Polyclonal
Immunogen:	The immunogen for anti-WNT8B antibody: synthetic peptide directed towards the N terminal of human WNT8B. Synthetic peptide located within the following region: QLSSHGGLRSANRETA <del>FV</del> HAISSAGVMYTLTRNCSLGDFDNCGCDDSRNG
Formulation:	Liquid. Purified antibody supplied in 1x PBS buffer with 0.09% (w/v) sodium azide and 2% sucrose. <i>Note that this product is shipped as lyophilized powder to China customers.</i>
Purification:	Affinity Purified
Conjugation:	Unconjugated
Storage:	Store at -20°C as received.
Stability:	Stable for 12 months from date of receipt.
Predicted Protein Size:	39 kDa
Gene Name:	Wnt family member 8B
Database Link:	<a href="#">NP_003384</a> <a href="#">Entrez Gene 7479 Human</a> <a href="#">Q93098</a>



[View online »](#)

<b>Background:</b>	The WNT family consists of several secreted signaling proteins. These proteins have been implicated in oncogenesis and in several developmental processes, including regulation of cell fate and patterning during embryogenesis. WNT8B is a protein which shows 95%, 86% and 71% amino acid identity to the mouse, zebrafish and Xenopus Wnt8B proteins, respectively. The expression patterns of the human and mouse genes appear identical and are restricted to the developing brain. The chromosomal location of this gene to 10q24 suggests it as a candidate gene for partial epilepsy.
<b>Synonyms:</b>	member 8B; OTTHUMP00000020285; wingless-type MMTV integration site family
<b>Note:</b>	Immunogen Sequence Homology: Dog: 100%; Pig: 100%; Rat: 100%; Horse: 100%; Human: 100%; Mouse: 100%; Bovine: 100%; Rabbit: 100%; Guinea pig: 100%; Zebrafish: 86%
<b>Protein Families:</b>	Cancer stem cells, ES Cell Differentiation/IPS, Secreted Protein, Stem cell relevant signaling - Wnt Signaling pathway
<b>Protein Pathways:</b>	Basal cell carcinoma, Hedgehog signaling pathway, Melanogenesis, Pathways in cancer, Wnt signaling pathway

**Product images:**

WB Suggested Anti-WNT8B Antibody Titration:  
0.2-1 ug/ml; ELISA Titer: 1:62500; Positive Control:  
COLO205 cell lysate