

Product datasheet for **TA344456**

TRIM25 Rabbit Polyclonal Antibody

Product data:

Product Type:	Primary Antibodies
Applications:	WB
Recommended Dilution:	WB
Reactivity:	Human
Host:	Rabbit
Isotype:	IgG
Clonality:	Polyclonal
Immunogen:	The immunogen for anti-TRIM25 antibody: synthetic peptide directed towards the middle region of human TRIM25. Synthetic peptide located within the following region: TPSSGDPGEHDPASTHKSTRPVKKVSKEEKSKKPPVPALPSKLPTFGA
Formulation:	Liquid. Purified antibody supplied in 1x PBS buffer with 0.09% (w/v) sodium azide and 2% sucrose. <i>Note that this product is shipped as lyophilized powder to China customers.</i>
Purification:	Affinity Purified
Conjugation:	Unconjugated
Storage:	Store at -20°C as received.
Stability:	Stable for 12 months from date of receipt.
Predicted Protein Size:	71 kDa
Gene Name:	tripartite motif containing 25
Database Link:	NP_005073 Entrez Gene 7706 Human Q14258



[View online »](#)

Background:

The protein encoded by this gene is a member of the tripartite motif (TRIM) family. The TRIM motif includes three zinc-binding domains, a RING, a B-box type 1 and a B-box type 2, and a coiled-coil region. The protein localizes to the cytoplasm. The presence of potential DNA-binding and dimerization-transactivation domains suggests that this protein may act as a transcription factor, similar to several other members of the TRIM family. Expression of the gene is upregulated in response to estrogen, and it is thought to mediate estrogen actions in breast cancer as a primary response gene.

Synonyms:

EFP; RNF147; Z147; ZNF147

Note:

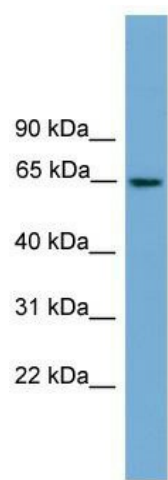
Immunogen Sequence Homology: Human: 100%; Bovine: 91%; Pig: 79%

Protein Families:

Druggable Genome, Transcription Factors

Protein Pathways:

RIG-I-like receptor signaling pathway

Product images:

WB Suggested Anti-TRIM25 Antibody Titration:
0.2-1 ug/ml; ELISA Titer: 1:62500; Positive Control:
Human Liver