

## Product datasheet for **TA344454**

### ZNF676 Rabbit Polyclonal Antibody

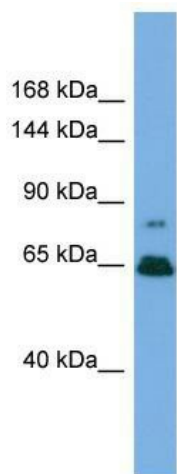
#### Product data:

<b>Product Type:</b>	Primary Antibodies
<b>Applications:</b>	WB
<b>Recommended Dilution:</b>	WB
<b>Reactivity:</b>	Human
<b>Host:</b>	Rabbit
<b>Isotype:</b>	IgG
<b>Clonality:</b>	Polyclonal
<b>Immunogen:</b>	The immunogen for Anti-ZNF676 antibody is: synthetic peptide directed towards the middle region of Human ZNF676. Synthetic peptide located within the following region: SSTLTYYKSIHTGEKPYKCEECGKAFSKFSILTKHKVIHTGEKPYKCEEC
<b>Formulation:</b>	Liquid. Purified antibody supplied in 1x PBS buffer with 0.09% (w/v) sodium azide and 2% sucrose.
<b>Purification:</b>	Affinity Purified
<b>Conjugation:</b>	Unconjugated
<b>Storage:</b>	Store at -20°C as received.
<b>Stability:</b>	Stable for 12 months from date of receipt.
<b>Predicted Protein Size:</b>	64 kDa
<b>Gene Name:</b>	zinc finger protein 676
<b>Database Link:</b>	<a href="#">NP_001001411</a> <a href="#">Entrez Gene 163223 Human</a> <a href="#">Q8N7Q3</a>
<b>Background:</b>	ZNF676 may be involved in transcriptional regulation.
<b>Synonyms:</b>	zinc finger protein 676



**Note:** Immunogen Sequence Homology: Human: 100%; Zebrafish: 91%; Pig: 90%; Rat: 90%; Mouse: 90%; Bovine: 90%; Dog: 82%; Horse: 82%; Rabbit: 82%; Guinea pig: 82%

**Product images:**



Host: Rabbit; Target Name: ZNF676; Sample  
Tissue: HepG2 Whole Cell lysates; Antibody  
Dilution: 1.0 ug/ml