

Product datasheet for **TA344452**

TFEB Rabbit Polyclonal Antibody

Product data:

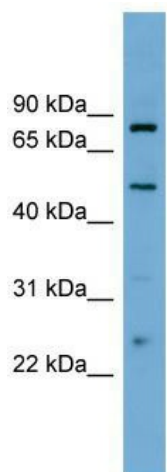
Product Type:	Primary Antibodies
Applications:	WB
Recommended Dilution:	WB
Reactivity:	Human
Host:	Rabbit
Isotype:	IgG
Clonality:	Polyclonal
Immunogen:	The immunogen for anti-TFEB antibody: synthetic peptide directed towards the middle region of human TFEB. Synthetic peptide located within the following region: DFSHLSLFGGREDEGPPGYEPLAPGHGSPFSPSLKDLMLLDDSLLP
Formulation:	Liquid. Purified antibody supplied in 1x PBS buffer with 0.09% (w/v) sodium azide and 2% sucrose. <i>Note that this product is shipped as lyophilized powder to China customers.</i>
Purification:	Affinity Purified
Conjugation:	Unconjugated
Storage:	Store at -20°C as received.
Stability:	Stable for 12 months from date of receipt.
Predicted Protein Size:	53 kDa
Gene Name:	transcription factor EB
Database Link:	NP_009093 Entrez Gene 7942 Human P19484
Background:	The TFEB gene fuses with an intronless gene in renal tumors harboring the t(6;11)(p21;q13) chromosome translocation. It encodes a protein that is a highly sensitive and specific diagnostic marker for renal neoplasms.
Synonyms:	ALPHATFEB; BHLHE35; TCFEB
Note:	Immunogen Sequence Homology: Human: 100%; Dog: 86%; Rabbit: 86%; Horse: 85%; Goat: 79%; Bovine: 79%



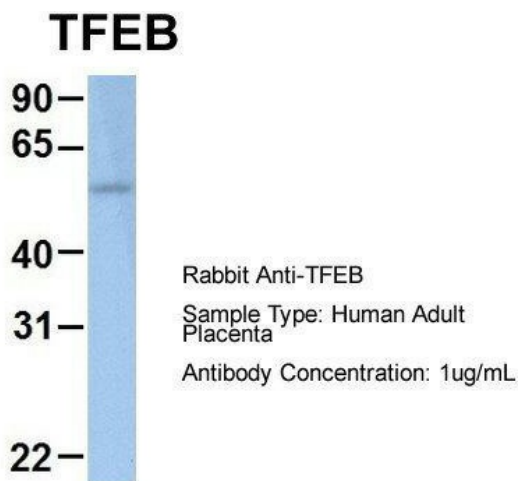
[View online »](#)

Protein Families: Druggable Genome, Transcription Factors

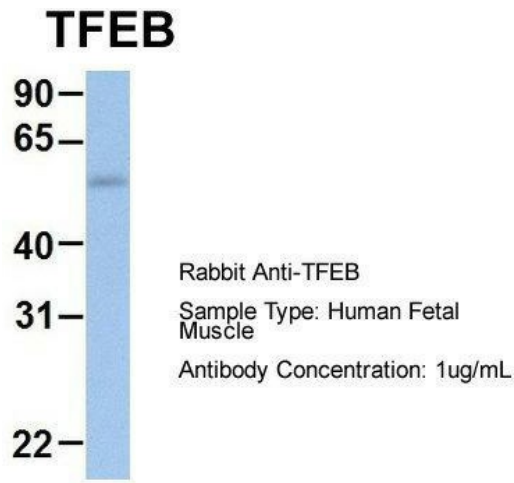
Product images:



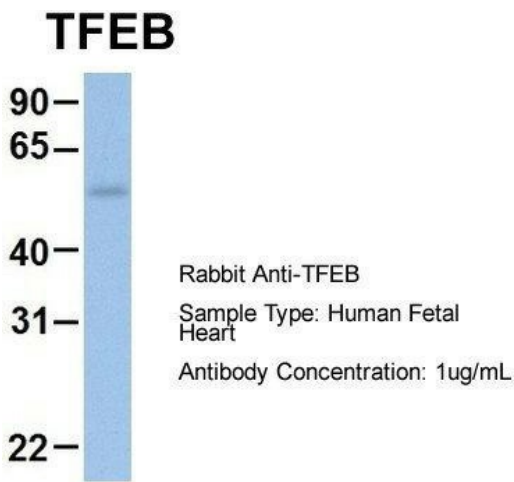
WB Suggested Anti-TFEB Antibody Titration: 0.2-1 ug/ml; Positive Control: PANC1 cell lysate



Host: Rabbit; Target Name: TFEB; Sample Tissue: Human Adult Placenta; Antibody Dilution: 1.0 ug/ml



Host: Rabbit; Target Name: TFEB; Sample Tissue: Human Fetal Muscle; Antibody Dilution: 1.0 ug/ml



Host: Rabbit; Target Name: TFEB; Sample Tissue: Human Fetal Heart; Antibody Dilution: 1.0 ug/ml