

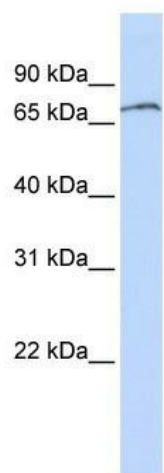
## Product datasheet for **TA344451**

### ZNF768 Rabbit Polyclonal Antibody

#### Product data:

Product Type:	Primary Antibodies
Applications:	WB
Recommended Dilution:	WB
Reactivity:	Human
Host:	Rabbit
Isotype:	IgG
Clonality:	Polyclonal
Immunogen:	The immunogen for anti-ZNF768 antibody: synthetic peptide directed towards the N terminal of human ZNF768. Synthetic peptide located within the following region: DSQSPEFESQSPRYEPQSPGYEPRSPGYESESRYESQNTLK
Formulation:	Liquid. Purified antibody supplied in 1x PBS buffer with 0.09% (w/v) sodium azide and 2% sucrose.
Purification:	Affinity Purified
Conjugation:	Unconjugated
Storage:	Store at -20°C as received.
Stability:	Stable for 12 months from date of receipt.
Predicted Protein Size:	60 kDa
Gene Name:	zinc finger protein 768
Database Link:	<a href="#">NP_078947</a> <a href="#">Entrez Gene 79724 Human</a> <a href="#">Q9H5H4</a>
Background:	ZNF768 belongs to the krueppel C2H2-type zinc-finger protein family. It contains 10 C2H2-type zinc fingers. It may be involved in transcriptional regulation.
Synonyms:	FLJ23436
Note:	Immunogen Sequence Homology: Human: 100%; Pig: 92%; Horse: 91%; Rat: 75%
Protein Families:	Transcription Factors


[View online »](#)

**Product images:**


WB Suggested Anti-ZNF768 Antibody Titration:  
0.2-1 ug/ml; ELISA Titer: 1:62500; Positive Control:  
Jurkat cell lysate