

## Product datasheet for **TA344450**

### JMJD5 (KDM8) Rabbit Polyclonal Antibody

#### Product data:

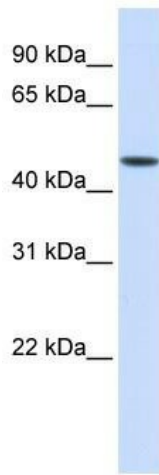
Product Type:	Primary Antibodies
Applications:	WB
Recommended Dilution:	WB, ChIP
Reactivity:	Human
Host:	Rabbit
Isotype:	IgG
Clonality:	Polyclonal
Immunogen:	The immunogen for anti-JMJD5 antibody: synthetic peptide directed towards the middle region of human JMJD5. Synthetic peptide located within the following region: KYRPIQTPSVCSDSLESPDEDMGSDSDVTTESGSSPSHSPEERQDPGSAP
Formulation:	Liquid. Purified antibody supplied in 1x PBS buffer with 0.09% (w/v) sodium azide and 2% sucrose. <i>Note that this product is shipped as lyophilized powder to China customers.</i>
Purification:	Affinity Purified
Conjugation:	Unconjugated
Storage:	Store at -20°C as received.
Stability:	Stable for 12 months from date of receipt.
Predicted Protein Size:	47 kDa
Gene Name:	lysine demethylase 8
Database Link:	<a href="#">NP_079049</a> <a href="#">Entrez Gene 79831 Human</a> <a href="#">Q8N371</a>
Background:	JMJD5 is a histone lysine demethylase. Studies of a similar protein in mouse indicate a potential role for this protein as a tumor suppressor. JMJD5 is a putative histone lysine demethylase that contains a Jumonji C (JmjC) domain (Shi, 2007 [PubMed 17909537]). [supplied by OMIM]
Synonyms:	JMJD5



[View online »](#)

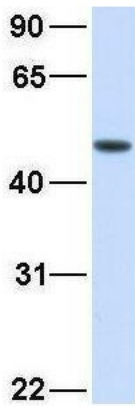
**Note:** Immunogen Sequence Homology: Rat: 100%; Human: 100%; Mouse: 100%; Rabbit: 100%; Dog: 93%; Horse: 93%; Bovine: 93%; Pig: 92%; Zebrafish: 92%; Guinea pig: 92%

**Product images:**



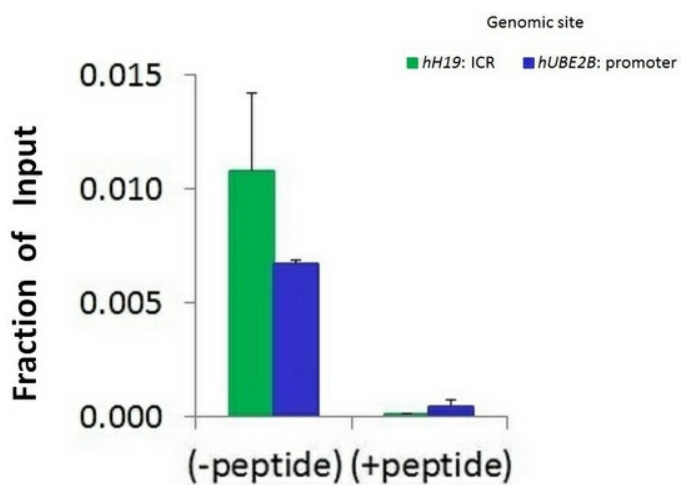
WB Suggested Anti-JMJD5 Antibody Titration: 0.2-1 ug/ml; ELISA Titer: 1:62500; Positive Control: Human Liver

**JMJD5**



Rabbit Anti-JMJD5  
Sample Type: Human Fetal Liver  
Antibody Concentration: 1ug/mL

Host: Rabbit; Target Name: JMJD5; Sample Tissue: Human Fetal Liver; Antibody Dilution: 1.0 ug/ml



Chromatin Immunoprecipitation (ChIP) Using JMJD5 antibody - middle region and HCT116 Cells