

## Product datasheet for **TA344449**

### RASSF7 Rabbit Polyclonal Antibody

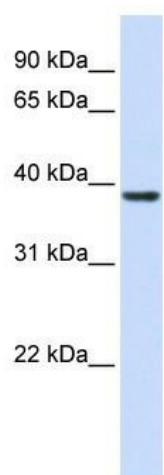
#### Product data:

|                         |                                                                                                                                                                                                                         |
|-------------------------|-------------------------------------------------------------------------------------------------------------------------------------------------------------------------------------------------------------------------|
| Product Type:           | Primary Antibodies                                                                                                                                                                                                      |
| Applications:           | WB                                                                                                                                                                                                                      |
| Recommended Dilution:   | WB                                                                                                                                                                                                                      |
| Reactivity:             | Human                                                                                                                                                                                                                   |
| Host:                   | Rabbit                                                                                                                                                                                                                  |
| Isotype:                | IgG                                                                                                                                                                                                                     |
| Clonality:              | Polyclonal                                                                                                                                                                                                              |
| Immunogen:              | The immunogen for anti-RASSF7 antibody: synthetic peptide directed towards the middle region of human RASSF7. Synthetic peptide located within the following region: DISIPDYCSLGDGEEEEITINAWFGPQGTISPLHQDPQQNFLVQVMGRKY |
| Formulation:            | Liquid. Purified antibody supplied in 1x PBS buffer with 0.09% (w/v) sodium azide and 2% sucrose.<br><i>Note that this product is shipped as lyophilized powder to China customers.</i>                                 |
| Purification:           | Affinity Purified                                                                                                                                                                                                       |
| Conjugation:            | Unconjugated                                                                                                                                                                                                            |
| Storage:                | Store at -20°C as received.                                                                                                                                                                                             |
| Stability:              | Stable for 12 months from date of receipt.                                                                                                                                                                              |
| Predicted Protein Size: | 40 kDa                                                                                                                                                                                                                  |
| Gene Name:              | Ras association domain family member 7                                                                                                                                                                                  |
| Database Link:          | <a href="#">NP_003466</a><br><a href="#">Entrez Gene 8045 Human</a><br><a href="#">Q02833</a>                                                                                                                           |
| Background:             | The function remains unknown.                                                                                                                                                                                           |
| Synonyms:               | C11orf13; HRAS1; HRC1                                                                                                                                                                                                   |
| Note:                   | Immunogen Sequence Homology: Human: 100%; Dog: 93%; Rat: 86%; Pig: 79%; Bovine: 79%; Horse: 77%                                                                                                                         |



[View online »](#)

## Product images:



WB Suggested Anti-RASSF7 Antibody Titration:  
0.2-1 ug/ml; ELISA Titer: 1:312500; Positive  
Control: Human Muscle