

Product datasheet for **TA344448**

Calreticulin (CALR) Rabbit Polyclonal Antibody

Product data:

Product Type:	Primary Antibodies
Applications:	WB
Recommended Dilution:	WB
Reactivity:	Human
Host:	Rabbit
Isotype:	IgG
Clonality:	Polyclonal
Immunogen:	The immunogen for Anti-CALR antibody is: synthetic peptide directed towards the N-terminal region of Human CALR. Synthetic peptide located within the following region: SSGKFGDEEKDKGLQTSQDARFYALSASFEPFSNKGQTLVVQFTVKHEQ
Formulation:	Liquid. Purified antibody supplied in 1x PBS buffer with 0.09% (w/v) sodium azide and 2% sucrose. <i>Note that this product is shipped as lyophilized powder to China customers.</i>
Purification:	Affinity Purified
Conjugation:	Unconjugated
Storage:	Store at -20°C as received.
Stability:	Stable for 12 months from date of receipt.
Predicted Protein Size:	45 kDa
Gene Name:	calreticulin
Database Link:	NP_004334 Entrez Gene 811 Human P27797
Background:	Calreticulin is a multifunctional protein that acts as a major Ca ²⁺ -binding (storage) protein in the lumen of the endoplasmic reticulum.
Synonyms:	cC1qR; CRT; HEL-S-99n; RO; SSA
Note:	Immunogen Sequence Homology: Pig: 100%; Human: 100%; Dog: 93%; Rat: 93%; Horse: 93%; Mouse: 93%; Bovine: 93%; Rabbit: 93%; Zebrafish: 93%; Guinea pig: 93%

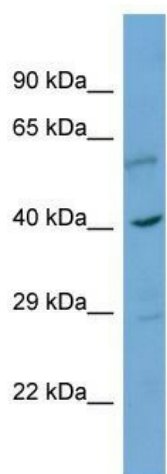


[View online »](#)

Protein Families: Druggable Genome, Secreted Protein, Transcription Factors

Protein Pathways: Antigen processing and presentation

Product images:



Host: Rabbit; Target Name: CALR; Sample Tissue: 721_B Whole cell lysates; Antibody Dilution: 1.0 ug/ml; There is BioGPS gene expression data showing that CALR is expressed in 721_B