

## Product datasheet for **TA344446**

### EEA1 Rabbit Polyclonal Antibody

#### Product data:

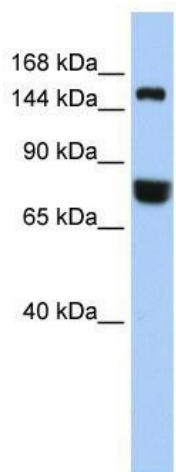
|                         |  |
|-------------------------|--|
| Product Type:           | Primary Antibodies   |
| Applications:           | IHC, WB  |
| Recommended Dilution:   | WB   |
| Reactivity:             | Human  |
| Host:                   | Rabbit   |
| Isotype:                | IgG  |
| Clonality:              | Polyclonal   |
| Immunogen:              | The immunogen for anti-EEA1 antibody: synthetic peptide directed towards the middle region of human EEA1. Synthetic peptide located within the following region:<br>QEKRNQQLKDKQVKKEEEELKKEFIEKEAKLHSEIKEKEVGMKKHEESEA |
| Formulation:            | Liquid. Purified antibody supplied in 1x PBS buffer with 0.09% (w/v) sodium azide and 2% sucrose.<br><i>Note that this product is shipped as lyophilized powder to China customers.</i>                                |
| Purification:           | Affinity Purified  |
| Conjugation:            | Unconjugated   |
| Storage:                | Store at -20°C as received.  |
| Stability:              | Stable for 12 months from date of receipt.   |
| Predicted Protein Size: | 162 kDa  |
| Gene Name:              | early endosome antigen 1   |
| Database Link:          | <a href="#">NP_003557</a><br><a href="#">Entrez Gene 8411 Human Q15075</a>   |
| Background:             | EEA1 is involved in neuronal synaptic vesicle function and axonal transport and growth. EEA1 may undergo calcium-dependent conformational changes that are required for binding to SNAP-25.                            |
| Synonyms:               | MST105; MSTP105; ZFYVE2  |
| Note:                   | Immunogen Sequence Homology: Human: 100%; Rat: 90%; Dog: 79%; Horse: 79%; Bovine: 79%; Rabbit: 79%   |



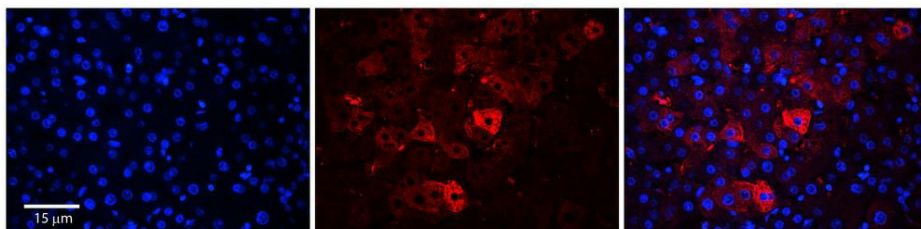
[View online »](#)

Protein Pathways: Endocytosis

### Product images:



WB Suggested Anti-EEA1 Antibody Titration: 0.2-1 ug/ml; ELISA Titer: 1:12500; Positive Control: 721\_B cell lysate EEA1 is supported by BioGPS gene expression data to be expressed in 721\_B



Rabbit Anti-EEA1 Antibody; Formalin Fixed Paraffin Embedded Tissue: Human Adult Liver; Observed Staining: Cytoplasm in hepatocytes, moderate signal, moderate tissue distribution; Primary Antibody Concentration: 1:100; Secondary Antibody: Donkey anti-Rabbi