

## Product datasheet for **TA344443**

### **RNF93 (TRIM15) Rabbit Polyclonal Antibody**

#### **Product data:**

<b>Product Type:</b>	Primary Antibodies
<b>Applications:</b>	WB
<b>Recommended Dilution:</b>	WB
<b>Reactivity:</b>	Human
<b>Host:</b>	Rabbit
<b>Isotype:</b>	IgG
<b>Clonality:</b>	Polyclonal
<b>Immunogen:</b>	The immunogen for anti-TRIM15 antibody: synthetic peptide directed towards the middle region of human TRIM15. Synthetic peptide located within the following region: HLEIDSGVITLDPQTASRSLVLSSEDRKSVRYTRQKKSLPDSPLRFDGLPA
<b>Formulation:</b>	Liquid. Purified antibody supplied in 1x PBS buffer with 0.09% (w/v) sodium azide and 2% sucrose. <i>Note that this product is shipped as lyophilized powder to China customers.</i>
<b>Purification:</b>	Affinity Purified
<b>Conjugation:</b>	Unconjugated
<b>Storage:</b>	Store at -20°C as received.
<b>Stability:</b>	Stable for 12 months from date of receipt.
<b>Predicted Protein Size:</b>	52 kDa
<b>Gene Name:</b>	tripartite motif containing 15
<b>Database Link:</b>	<a href="#">NP_150232</a> <a href="#">Entrez Gene 89870 Human</a> <a href="#">Q9C019</a>



[View online »](#)

**Background:**

TRIM15 is a member of the tripartite motif (TRIM) family. The TRIM motif includes three zinc-binding domains, a RING, a B-box type 1 and a B-box type 2, and a coiled-coil region. The protein localizes to the cytoplasm. Its function has not been identified. The protein encoded by this gene is a member of the tripartite motif (TRIM) family. The TRIM motif includes three zinc-binding domains, a RING, a B-box type 1 and a B-box type 2, and a coiled-coil region. The protein localizes to the cytoplasm. Alternatively spliced transcript variants have been described, but their biological validity has not been determined.

**Synonyms:**

RNF93; ZNF178; ZNFB7

**Note:**

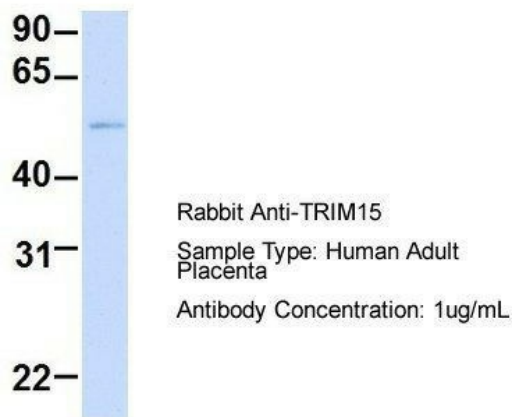
Immunogen Sequence Homology: Human: 100%; Yeast: 100%; Pig: 86%; Bovine: 86%; Rabbit: 79%

**Protein Families:**

Druggable Genome, Transcription Factors

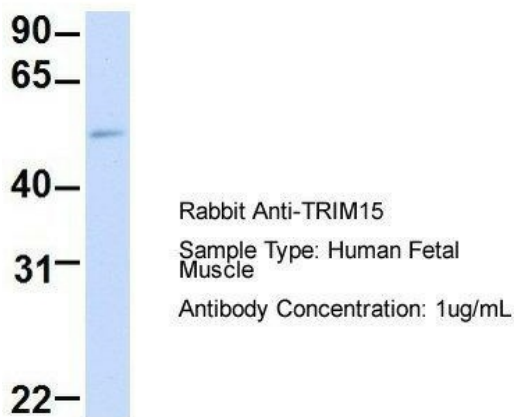
**Product images:**

### TRIM15

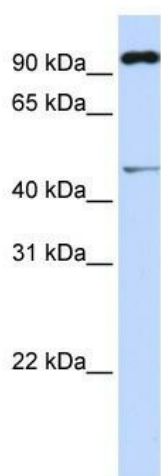


Host: Rabbit; Target Name: TRIM15; Sample Tissue: Human Adult Placenta; Antibody Dilution: 1.0 ug/ml

### TRIM15



Host: Rabbit; Target Name: TRIM15; Sample Tissue: Human Fetal Muscle; Antibody Dilution: 1.0 ug/ml



WB Suggested Anti-TRIM15 Antibody Titration:  
0.2-1 ug/ml; ELISA Titer: 1:312500; Positive  
Control: 721\_B cell lysate TRIM15 is strongly  
supported by BioGPS gene expression data to be  
expressed in Human 721\_B cells