

Product datasheet for TA344435

MAFB Rabbit Polyclonal Antibody

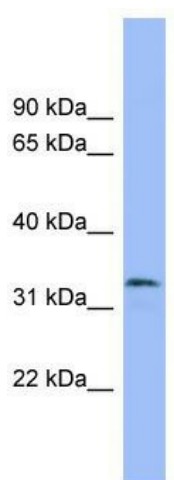
Product data:

Product Type:	Primary Antibodies
Applications:	WB
Recommended Dilution:	WB
Reactivity:	Human, Mouse
Host:	Rabbit
Isotype:	IgG
Clonality:	Polyclonal
Immunogen:	The immunogen for anti-MAFB antibody: synthetic peptide directed towards the middle region of human MAFB. Synthetic peptide located within the following region: YAQSCRYKRVQKHHLENEKTQLIQQVEQLKQEVSLARERDAYKVKCEK
Formulation:	Liquid. Purified antibody supplied in 1x PBS buffer with 0.09% (w/v) sodium azide and 2% sucrose. <i>Note that this product is shipped as lyophilized powder to China customers.</i>
Purification:	Affinity Purified
Conjugation:	Unconjugated
Storage:	Store at -20°C as received.
Stability:	Stable for 12 months from date of receipt.
Predicted Protein Size:	36 kDa
Gene Name:	MAF bZIP transcription factor B
Database Link:	NP_005452 Entrez Gene 16658 Mouse Entrez Gene 9935 Human Q9Y5Q3
Background:	MAFB is a basic leucine zipper (bZIP) transcription factor that plays an important role in the regulation of lineage-specific hematopoiesis. The nuclear protein represses ETS1-mediated transcription of erythroid-specific genes in myeloid cells.
Synonyms:	DURS3; KRML; MCTO
Note:	Immunogen Sequence Homology: Dog: 100%; Pig: 100%; Rat: 100%; Horse: 100%; Human: 100%; Mouse: 100%; Sheep: 100%; Bovine: 100%; Guinea pig: 100%; Zebrafish: 86%


[View online »](#)

Protein Families: Druggable Genome, Transcription Factors

Product images:



WB Suggested Anti-MAFB Antibody Titration: 0.2-1 ug/ml; ELISA Titer: 1:12500; Positive Control: OVCAR-3 cell lysate