

Product datasheet for **TA344434**

GTF2A1 Rabbit Polyclonal Antibody

Product data:

Product Type:	Primary Antibodies
Applications:	WB
Recommended Dilution:	WB
Reactivity:	Human
Host:	Rabbit
Isotype:	IgG
Clonality:	Polyclonal
Immunogen:	The immunogen for anti-GTF2A1 antibody: synthetic peptide directed towards the N terminal of human GTF2A1. Synthetic peptide located within the following region: ANSANTNTVPKLYRSVIEDVINDVRDIFLDDGVDEQVLMELKTLWENKLM
Formulation:	Liquid. Purified antibody supplied in 1x PBS buffer with 0.09% (w/v) sodium azide and 2% sucrose. <i>Note that this product is shipped as lyophilized powder to China customers.</i>
Purification:	Affinity Purified
Conjugation:	Unconjugated
Storage:	Store at -20°C as received.
Stability:	Stable for 12 months from date of receipt.
Predicted Protein Size:	41 kDa
Gene Name:	general transcription factor IIA subunit 1
Database Link:	NP_056943 Entrez Gene 2957 Human P52655
Background:	GTF2A1 belongs to the TFIIA subunit 1 family. It is a component of the transcription machinery of RNA polymerase II and plays an important role in transcriptional activation. This protein induces a conformational change within the TBP/TATA complex that enhances its stability under both in vitro and physiological salt conditions.
Synonyms:	TF2A1; TFIIA; TFIIA-42; TFIIAL



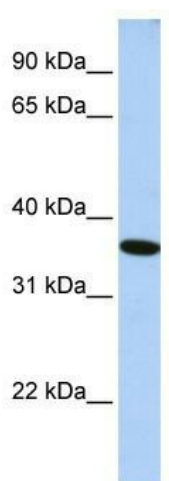
[View online »](#)

Note: Immunogen Sequence Homology: Dog: 100%; Pig: 100%; Rat: 100%; Horse: 100%; Human: 100%; Mouse: 100%; Bovine: 100%; Rabbit: 100%; Guinea pig: 100%

Protein Families: Transcription Factors

Protein Pathways: Basal transcription factors

Product images:



WB Suggested Anti-GTF2A1 Antibody Titration:
0.2-1 ug/ml; ELISA Titer: 1:62500; Positive Control:
HepG2 cell lysate