

## Product datasheet for **TA344433**

### GTF2A1 Rabbit Polyclonal Antibody

#### Product data:

Product Type:	Primary Antibodies
Applications:	WB
Recommended Dilution:	WB
Reactivity:	Human
Host:	Rabbit
Isotype:	IgG
Clonality:	Polyclonal
Immunogen:	The immunogen for anti-GTF2A1 antibody: synthetic peptide directed towards the middle region of human GTF2A1. Synthetic peptide located within the following region: GQQQPQAQPAQTQAPLVLQVDGTGDTSSSEDEDEEEDYDDDEEEDKEKDG
Formulation:	Liquid. Purified antibody supplied in 1x PBS buffer with 0.09% (w/v) sodium azide and 2% sucrose. <i>Note that this product is shipped as lyophilized powder to China customers.</i>
Purification:	Affinity Purified
Conjugation:	Unconjugated
Storage:	Store at -20°C as received.
Stability:	Stable for 12 months from date of receipt.
Predicted Protein Size:	37 kDa
Gene Name:	general transcription factor IIA subunit 1
Database Link:	<a href="#">NP_963889</a> <a href="#">Entrez Gene 2957 Human</a> <a href="#">P52655</a>
Background:	Transcription initiation factor IIA . and . chains (GTF2A1, TFIIA p35 and p19 subunits, TFIIAL) binding ability of TLP is required for characteristic cytoplasmic localization of TLP. TFIIA may regulate the intracellular molecular state and the function of TLP through its property of binding to TLP.
Synonyms:	TF2A1; TFIIA; TFIIA-42; TFIIAL



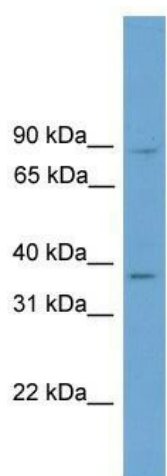
[View online »](#)

**Note:** Immunogen Sequence Homology: Pig: 100%; Rat: 100%; Horse: 100%; Human: 100%; Mouse: 100%; Sheep: 100%; Bovine: 100%; Rabbit: 100%; Dog: 93%; Yeast: 93%; Guinea pig: 93%

**Protein Families:** Transcription Factors

**Protein Pathways:** Basal transcription factors

### Product images:



WB Suggested Anti-GTF2A1 Antibody Titration:  
0.2-1 ug/ml; ELISA Titer: 1:12500; Positive Control:  
HepG2 cell lysate