

## Product datasheet for **TA344429**

### TFDP3 Rabbit Polyclonal Antibody

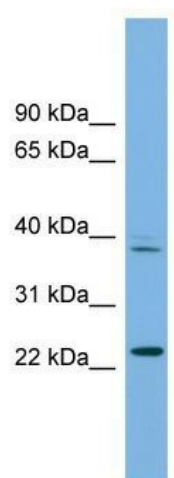
#### Product data:

Product Type:	Primary Antibodies
Applications:	WB
Recommended Dilution:	WB
Reactivity:	Human
Host:	Rabbit
Isotype:	IgG
Clonality:	Polyclonal
Immunogen:	The immunogen for anti-TFDP3 antibody: synthetic peptide directed towards the N terminal of human TFDP3. Synthetic peptide located within the following region: PVVGSPNPPSTHFASQNQHSYSSPPWAGQHNRKGEKNGMGLCRLSMKVWE
Formulation:	Liquid. Purified antibody supplied in 1x PBS buffer with 0.09% (w/v) sodium azide and 2% sucrose. <i>Note that this product is shipped as lyophilized powder to China customers.</i>
Purification:	Affinity Purified
Conjugation:	Unconjugated
Storage:	Store at -20°C as received.
Stability:	Stable for 12 months from date of receipt.
Predicted Protein Size:	38 kDa
Gene Name:	transcription factor Dp family member 3
Database Link:	<a href="#">NP_057605</a> <a href="#">Entrez Gene 51270 Human</a> <a href="#">Q5H9I0</a>
Background:	The specific function of the protein remains unknown.
Synonyms:	CT30; DP4; HCA661
Note:	Immunogen Sequence Homology: Human: 100%; Rabbit: 79%; Pig: 77%; Rat: 77%; Guinea pig: 77%



[View online »](#)

## Product images:



WB Suggested Anti-TFDP3 Antibody Titration: 0.2-1 ug/ml; ELISA Titer: 1:312500; Positive Control: Human Thymus