

Product datasheet for **TA344428**

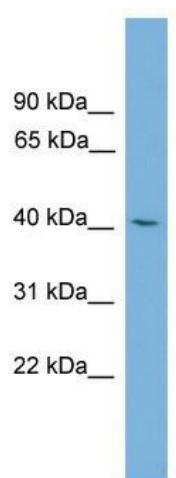
TFDP3 Rabbit Polyclonal Antibody

Product data:

Product Type:	Primary Antibodies
Applications:	WB
Recommended Dilution:	WB
Reactivity:	Human
Host:	Rabbit
Isotype:	IgG
Clonality:	Polyclonal
Immunogen:	The immunogen for anti-TFDP3 antibody: synthetic peptide directed towards the middle region of human TFDP3. Synthetic peptide located within the following region: ASDLTNIAIGMLATSSGGSQYSGSRVETPAVEEEEEEDNNDDDLSENDED
Formulation:	Liquid. Purified antibody supplied in 1x PBS buffer with 0.09% (w/v) sodium azide and 2% sucrose.
Purification:	Affinity Purified
Conjugation:	Unconjugated
Storage:	Store at -20°C as received.
Stability:	Stable for 12 months from date of receipt.
Predicted Protein Size:	38 kDa
Gene Name:	transcription factor Dp family member 3
Database Link:	NP_057605 Entrez Gene 51270 Human Q5H9I0
Background:	The specific function of the protein remains unknown.
Synonyms:	CT30; DP4; HCA661
Note:	Immunogen Sequence Homology: Human: 100%; Dog: 93%; Pig: 93%; Rat: 93%; Horse: 93%; Mouse: 93%; Bovine: 93%; Rabbit: 93%; Guinea pig: 93%



[View online »](#)

Product images:


WB Suggested Anti-TFDP3 Antibody Titration: 0.2-1 ug/ml; Positive Control: NCI-H226 cell lysate