

Product datasheet for **TA344417**

JHDM1D (KDM7A) Rabbit Polyclonal Antibody

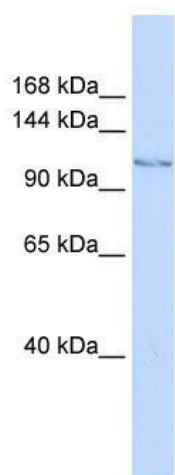
Product data:

Product Type:	Primary Antibodies
Applications:	WB
Recommended Dilution:	WB
Reactivity:	Human
Host:	Rabbit
Isotype:	IgG
Clonality:	Polyclonal
Immunogen:	The immunogen for anti-JHDM1D antibody: synthetic peptide directed towards the middle region of human JHDM1D. Synthetic peptide located within the following region: LDAIGTKRFDSEKAGDREVQRTMLELLNQLDGFQPNQVKVIAATNRVDI
Formulation:	Liquid. Purified antibody supplied in 1x PBS buffer with 0.09% (w/v) sodium azide and 2% sucrose. <i>Note that this product is shipped as lyophilized powder to China customers.</i>
Purification:	Affinity Purified
Conjugation:	Unconjugated
Storage:	Store at -20°C as received.
Stability:	Stable for 12 months from date of receipt.
Predicted Protein Size:	106 kDa
Gene Name:	lysine demethylase 7A
Database Link:	NP_085150 Entrez Gene 80853 Human Q6ZMT4
Background:	JHDM1D belongs to the JHDM1 histone demethylase family. It contains 1 JmjC domain and 1 PHD-type zinc finger. The function of JHDM1D remains unknown.
Synonyms:	JHDM1D
Note:	Immunogen Sequence Homology: Human: 100%; Rabbit: 92%; Dog: 85%; Rat: 85%; Mouse: 85%



[View online »](#)

Product images:



WB Suggested Anti-JHDM1D Antibody Titration:
0.2-1 ug/ml; ELISA Titer: 1:1562500; Positive
Control: MCF7 cell lysate