

## Product datasheet for **TA344413**

### BPGM Rabbit Polyclonal Antibody

#### Product data:

Product Type:	Primary Antibodies
Applications:	WB
Recommended Dilution:	WB
Reactivity:	Human
Host:	Rabbit
Isotype:	IgG
Clonality:	Polyclonal
Immunogen:	The immunogen for anti-BPGM antibody: synthetic peptide directed towards the middle region of human BPGM. Synthetic peptide located within the following region: EQVRLWRRSYNVTPPPIEESHPIYYQEIYNDRRYKVCDVPLDQLPRSESLK
Formulation:	Liquid. Purified antibody supplied in 1x PBS buffer with 0.09% (w/v) sodium azide and 2% sucrose. <i>Note that this product is shipped as lyophilized powder to China customers.</i>
Purification:	Affinity Purified
Conjugation:	Unconjugated
Storage:	Store at -20°C as received.
Stability:	Stable for 12 months from date of receipt.
Predicted Protein Size:	28 kDa
Gene Name:	bisphosphoglycerate mutase
Database Link:	<a href="#">NP_001715</a> <a href="#">Entrez Gene 669 Human</a> <a href="#">P07738</a>
Background:	BPGM belongs to the phosphoglycerate mutase family, BPG-dependent PGAM subfamily. It plays a major role in regulating hemoglobin oxygen affinity as a consequence of controlling 2,3-BPG concentration. It can also catalyze the reaction of EC 5.4.2.1 (mutase) and EC 3.1.3.13 (phosphatase), but with a reduced activity.
Synonyms:	DPGM



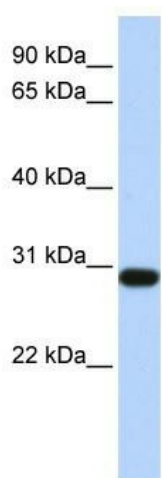
[View online »](#)

**Note:** Immunogen Sequence Homology: Human: 100%; Dog: 93%; Rat: 93%; Bovine: 93%; Zebrafish: 92%; Pig: 86%; Rabbit: 86%; Guinea pig: 86%; Horse: 79%; Mouse: 79%

**Protein Families:** Druggable Genome

**Protein Pathways:** Glycolysis / Gluconeogenesis, Metabolic pathways

**Product images:**



WB Suggested Anti-BPGM Antibody Titration: 0.2-1 ug/ml; ELISA Titer: 1:312500; Positive Control: Human heart