

## Product datasheet for **TA344410**

### DUSP5 Rabbit Polyclonal Antibody

#### Product data:

Product Type:	Primary Antibodies
Applications:	WB
Recommended Dilution:	WB
Reactivity:	Human
Host:	Rabbit
Isotype:	IgG
Clonality:	Polyclonal
Immunogen:	The immunogen for anti-DUSP5 antibody: synthetic peptide directed towards the middle region of human DUSP5. Synthetic peptide located within the following region: AGSSLIGHLQTLSPDMQGAYCTFPASVLAPVPTHSTVSELSRSPVATATS
Formulation:	Liquid. Purified antibody supplied in 1x PBS buffer with 0.09% (w/v) sodium azide and 2% sucrose. <i>Note that this product is shipped as lyophilized powder to China customers.</i>
Purification:	Affinity Purified
Conjugation:	Unconjugated
Storage:	Store at -20°C as received.
Stability:	Stable for 12 months from date of receipt.
Predicted Protein Size:	42 kDa
Gene Name:	dual specificity phosphatase 5
Database Link:	<a href="#">NP_004410</a> <a href="#">Entrez Gene 1847 Human</a> <a href="#">Q16690</a>



[View online »](#)

**Background:**

The protein encoded by this gene is a member of the dual specificity protein phosphatase subfamily. These phosphatases inactivate their target kinases by dephosphorylating both the phosphoserine/threonine and phosphotyrosine residues. They negatively regulate members of the mitogen-activated protein (MAP) kinase superfamily (MAPK/ERK, SAPK/JNK, p38), which are associated with cellular proliferation and differentiation. Different members of the family of dual specificity phosphatases show distinct substrate specificities for various MAP kinases, different tissue distribution and subcellular localization, and different modes of inducibility of their expression by extracellular stimuli. This gene product inactivates ERK1, is expressed in a variety of tissues with the highest levels in pancreas and brain, and is localized in the nucleus.

**Synonyms:**

DUSP; HVH3

**Note:**

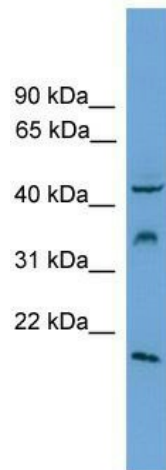
Immunogen Sequence Homology: Pig: 100%; Horse: 100%; Human: 100%; Dog: 92%; Mouse: 86%; Rabbit: 86%; Bovine: 85%; Rat: 79%; Guinea pig: 79%

**Protein Families:**

Phosphatase

**Protein Pathways:**

MAPK signaling pathway

**Product images:**

WB Suggested Anti-DUSP5 Antibody Titration:  
0.2-1 ug/ml; ELISA Titer: 1:312500; Positive  
Control: COLO205 cell lysate