

Product datasheet for **TA344408**

IMPA2 Rabbit Polyclonal Antibody

Product data:

Product Type:	Primary Antibodies
Applications:	WB
Recommended Dilution:	WB
Reactivity:	Human
Host:	Rabbit
Isotype:	IgG
Clonality:	Polyclonal
Immunogen:	The immunogen for anti-IMPA2 antibody: synthetic peptide directed towards the middle region of human IMPA2. Synthetic peptide located within the following region: RGRGAFcNGQRLRVSGETDLSKALVLTEIGPKRDPATLKLFLSNMERLLH
Formulation:	Liquid. Purified antibody supplied in 1x PBS buffer with 0.09% (w/v) sodium azide and 2% sucrose. <i>Note that this product is shipped as lyophilized powder to China customers.</i>
Purification:	Affinity Purified
Conjugation:	Unconjugated
Storage:	Store at -20°C as received.
Stability:	Stable for 12 months from date of receipt.
Predicted Protein Size:	32 kDa
Gene Name:	inositol monophosphatase 2
Database Link:	NP_055029 Entrez Gene 3613 Human O14732
Background:	IMPA2 belongs to the inositol monophosphatase family. The present study suggests that a promoter haplotype of IMPA2 possibly contributes to risk for bipolar disorder by elevating IMPA2 levels in the brain, albeit the genetic effect varies among populations.
Synonyms:	inosine monophosphatase 2; inositol(myo)-1(or 4)-monophosphatase 2; inositol monophosphatase 2 variant 1; inositol monophosphatase 2 variant 2

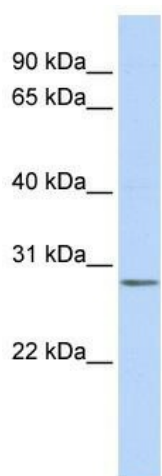


[View online »](#)

Note: Immunogen Sequence Homology: Human: 100%; Bovine: 100%; Dog: 93%; Pig: 86%; Horse: 86%; Guinea pig: 86%; Rat: 85%; Mouse: 85%; Rabbit: 85%

Protein Pathways: Inositol phosphate metabolism, Metabolic pathways, Phosphatidylinositol signaling system

Product images:



WB Suggested Anti-IMPA2 Antibody Titration: 0.2-1 ug/ml; ELISA Titer: 1:312500; Positive Control: Human Lung