

Product datasheet for **TA344401**

PTOP (ACD) Rabbit Polyclonal Antibody

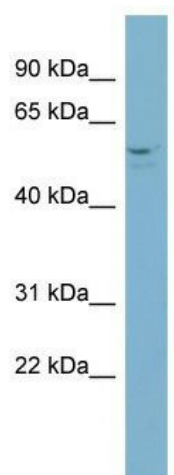
Product data:

Product Type:	Primary Antibodies
Applications:	WB
Recommended Dilution:	WB
Reactivity:	Human
Host:	Rabbit
Isotype:	IgG
Clonality:	Polyclonal
Immunogen:	The immunogen for anti-ACD antibody: synthetic peptide directed towards the middle region of human ACD. Synthetic peptide located within the following region: KNRPPFPRTGATRGAQEPCSVWEPPKRHRDGSFAFQYEPPTSLCARVQ
Formulation:	Liquid. Purified antibody supplied in 1x PBS buffer with 0.09% (w/v) sodium azide and 2% sucrose. <i>Note that this product is shipped as lyophilized powder to China customers.</i>
Purification:	Affinity Purified
Conjugation:	Unconjugated
Storage:	Store at -20°C as received.
Stability:	Stable for 12 months from date of receipt.
Predicted Protein Size:	58 kDa
Gene Name:	adrenocortical dysplasia homolog
Database Link:	NP_001075955 Entrez Gene 65057 Human Q96AP0
Background:	ACD is a protein that is involved in telomere function. This protein is one of six core proteins in the telosome/shelterin telomeric complex, which functions to maintain telomere length and to protect telomere ends. Through its interaction with other comp
Synonyms:	PIP1; PTOP; TINT1; TPP1
Note:	Immunogen Sequence Homology: Dog: 100%; Pig: 100%; Horse: 100%; Human: 100%; Bovine: 100%; Guinea pig: 100%; Rat: 93%; Mouse: 85%



[View online »](#)

Product images:



WB Suggested Anti-ACD Antibody Titration: 0.2-1 ug/ml; Positive Control: NCI-H226 cell lysate