

Product datasheet for **TA344398**

ASF1A Rabbit Polyclonal Antibody

Product data:

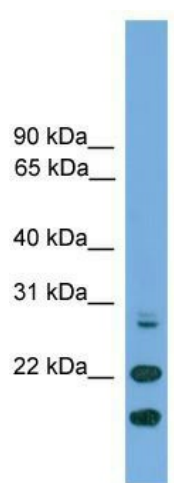
Product Type:	Primary Antibodies
Applications:	WB
Recommended Dilution:	WB
Reactivity:	Human
Host:	Rabbit
Isotype:	IgG
Clonality:	Polyclonal
Immunogen:	The immunogen for anti-ASF1A antibody: synthetic peptide directed towards the N terminal of human ASF1A. Synthetic peptide located within the following region: MAKVQVNNVVLDNPSPFYNPFQFEITFECIEDLSEDLWKIIVGSAES
Formulation:	Liquid. Purified antibody supplied in 1x PBS buffer with 0.09% (w/v) sodium azide and 2% sucrose. <i>Note that this product is shipped as lyophilized powder to China customers.</i>
Purification:	Affinity Purified
Conjugation:	Unconjugated
Storage:	Store at -20°C as received.
Stability:	Stable for 12 months from date of receipt.
Predicted Protein Size:	23 kDa
Gene Name:	anti-silencing function 1A histone chaperone
Database Link:	NP_054753 Entrez Gene 25842 Human Q9Y294
Background:	This gene encodes a member of the H3/H4 family of histone chaperone proteins and is similar to the anti-silencing function-1 gene in yeast. The protein is a key component of a histone donor complex that functions in nucleosome assembly. It interacts with histones H3 and H4, and functions together with a chromatin assembly factor during DNA replication and repair.
Synonyms:	CGI-98; CIA; HSPC146



[View online »](#)

Note: Immunogen Sequence Homology: Dog: 100%; Pig: 100%; Rat: 100%; Human: 100%; Mouse: 100%; Sheep: 100%; Bovine: 100%; Rabbit: 100%; Zebrafish: 93%; Goat: 79%

Product images:



WB Suggested Anti-ASF1A Antibody Titration: 0.2-1 ug/ml; ELISA Titer: 1:312500; Positive Control: THP-1 cell lysate