

Product datasheet for **TA344397**

CDCA5 Rabbit Polyclonal Antibody

Product data:

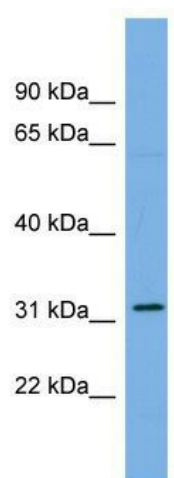
Product Type:	Primary Antibodies
Applications:	WB
Recommended Dilution:	WB
Reactivity:	Human
Host:	Rabbit
Isotype:	IgG
Clonality:	Polyclonal
Immunogen:	The immunogen for anti-CDCA5 antibody: synthetic peptide directed towards the middle region of human CDCA5. Synthetic peptide located within the following region: RRSYSRLETLGSASTSTPGRRSCFGFEGLLGAEDLSGVSPVWCSKLTEVP
Formulation:	Liquid. Purified antibody supplied in 1x PBS buffer with 0.09% (w/v) sodium azide and 2% sucrose. <i>Note that this product is shipped as lyophilized powder to China customers.</i>
Purification:	Affinity Purified
Conjugation:	Unconjugated
Storage:	Store at -20°C as received.
Stability:	Stable for 12 months from date of receipt.
Predicted Protein Size:	28 kDa
Gene Name:	cell division cycle associated 5
Database Link:	NP_542399 Entrez Gene 113130 Human Q96FF9
Background:	CDCA5 is the regulator of sister chromatid cohesion in mitosis. It may act by regulating the ability of the cohesin complex to mediate sister chromatid cohesion, perhaps by altering the nature of the interaction of cohesin with the chromosomes.
Synonyms:	SORORIN
Note:	Immunogen Sequence Homology: Human: 100%; Bovine: 100%; Dog: 93%; Pig: 93%; Rabbit: 86%; Mouse: 79%



[View online »](#)

Protein Families: Druggable Genome

Product images:



WB Suggested Anti-CDCA5 Antibody Titration:
0.2-1 ug/ml; Positive Control: OVCAR-3 cell lysate