

## Product datasheet for **TA344391**

### MACROH2A1 Rabbit Polyclonal Antibody

#### Product data:

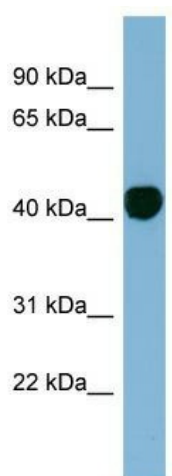
Product Type:	Primary Antibodies
Applications:	WB
Recommended Dilution:	WB
Reactivity:	Human
Host:	Rabbit
Isotype:	IgG
Clonality:	Polyclonal
Immunogen:	The immunogen for anti-H2AFY antibody: synthetic peptide directed towards the N terminal of human H2AFY. Synthetic peptide located within the following region: MSSRGGKKKSTKTSRSKAGVIFPVGRMLRYIKKGHPKYRIGVGPVYMA
Formulation:	Liquid. Purified antibody supplied in 1x PBS buffer with 0.09% (w/v) sodium azide and 2% sucrose. <i>Note that this product is shipped as lyophilized powder to China customers.</i>
Purification:	Affinity Purified
Conjugation:	Unconjugated
Storage:	Store at -20°C as received.
Stability:	Stable for 12 months from date of receipt.
Predicted Protein Size:	41 kDa
Gene Name:	H2A histone family member Y
Database Link:	<a href="#">NP_613075</a> <a href="#">Entrez Gene 9555 Human O75367</a>
Background:	Histones are basic nuclear proteins that are responsible for the nucleosome structure of the chromosomal fiber in eukaryotes. Nucleosomes consist of approximately 146 bp of DNA wrapped around a histone octamer composed of pairs of each of the four core hi
Synonyms:	H2A; H2A.y; H2AF12M; MACROH2A1.1; macroH2A1.2; mH2A1; y
Note:	Immunogen Sequence Homology: Dog: 100%; Pig: 100%; Rat: 100%; Horse: 100%; Human: 100%; Mouse: 100%; Bovine: 100%; Rabbit: 100%; Guinea pig: 100%



[View online »](#)

Protein Pathways: Systemic lupus erythematosus

### Product images:



WB Suggested Anti-H2AFY Antibody Titration: 0.2-1 ug/ml; ELISA Titer: 1:62500; Positive Control: NCI-H226 cell lysate. H2AFY is strongly supported by BioGPS gene expression data to be expressed in NCI-H226