

Product datasheet for **TA344388**

HIRIP3 Rabbit Polyclonal Antibody

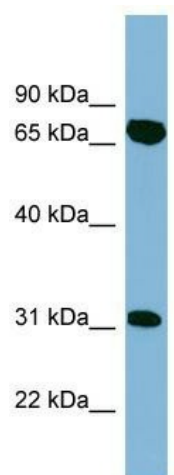
Product data:

Product Type:	Primary Antibodies
Applications:	WB
Recommended Dilution:	WB
Reactivity:	Human
Host:	Rabbit
Isotype:	IgG
Clonality:	Polyclonal
Immunogen:	The immunogen for anti-HIRIP3 antibody: synthetic peptide directed towards the middle region of human HIRIP3. Synthetic peptide located within the following region: RTRSSSSSSDGSPEAKGGKAGSGRRGEDHPAVMRLKRYIRACGAHRNYKK
Formulation:	Liquid. Purified antibody supplied in 1x PBS buffer with 0.09% (w/v) sodium azide and 2% sucrose. <i>Note that this product is shipped as lyophilized powder to China customers.</i>
Purification:	Affinity Purified
Conjugation:	Unconjugated
Storage:	Store at -20°C as received.
Stability:	Stable for 12 months from date of receipt.
Predicted Protein Size:	61 kDa
Gene Name:	HIRA interacting protein 3
Database Link:	NP_003600 Entrez Gene 8479 Human Q9BW71
Background:	The HIRA protein shares sequence similarity with Hir1p and Hir2p, the two corepressors of histone gene transcription characterized in the yeast, <i>Saccharomyces cerevisiae</i> . The structural features of the HIRA protein suggest that it may function as part of
Synonyms:	HIRA-interacting protein 3; HIRA interacting protein 3
Note:	Immunogen Sequence Homology: Dog: 100%; Human: 100%; Pig: 93%; Bovine: 86%



[View online »](#)

Product images:



WB Suggested Anti-HIRIP3 Antibody Titration: 0.2-1 ug/ml; Positive Control: ACHN cell lysate