

Product datasheet for **TA344387**

Histone H1.4 (HIST1H1E) Rabbit Polyclonal Antibody

Product data:

Product Type:	Primary Antibodies
Applications:	WB
Recommended Dilution:	WB
Reactivity:	Human
Host:	Rabbit
Isotype:	IgG
Clonality:	Polyclonal
Immunogen:	The immunogen for anti-HIST1H1E antibody: synthetic peptide directed towards the N terminal of human HIST1H1E. Synthetic peptide located within the following region: MSETAPAAPAAPAPAEKTPVKKKARKSAGAAKRKASGPPVSELITKAVAA
Formulation:	Liquid. Purified antibody supplied in 1x PBS buffer with 0.09% (w/v) sodium azide and 2% sucrose. <i>Note that this product is shipped as lyophilized powder to China customers.</i>
Purification:	Affinity Purified
Conjugation:	Unconjugated
Storage:	Store at -20°C as received.
Stability:	Stable for 12 months from date of receipt.
Predicted Protein Size:	24 kDa
Gene Name:	histone cluster 1, H1e
Database Link:	NP_005312 Entrez Gene 3008 Human P10412



[View online »](#)

Background:

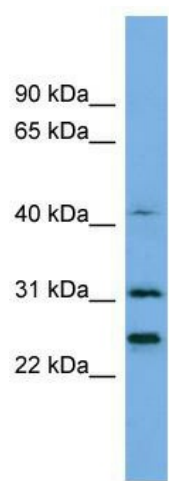
Histones are basic nuclear proteins responsible for nucleosome structure of the chromosomal fiber in eukaryotes. Two molecules of each of the four core histones (H2A, H2B, H3, and H4) form an octamer, around which approximately 146 bp of DNA is wrapped in repeating units, called nucleosomes. The linker histone, H1, interacts with linker DNA between nucleosomes and functions in the compaction of chromatin into higher order structures. This gene is intronless and encodes a member of the histone H1 family. Transcripts from this gene lack polyA tails but instead contain a palindromic termination element. This gene is found in the large histone gene cluster on chromosome 6.

Synonyms:

dj221C16.5; H1.4; H1E; H1F4; H1s-4

Note:

Immunogen Sequence Homology: Dog: 100%; Human: 100%; Rabbit: 100%; Pig: 93%; Rat: 93%; Bovine: 93%; Guinea pig: 93%; Mouse: 86%

Product images:

WB Suggested Anti-HIST1H1E Antibody Titration:
0.2-1 ug/ml; ELISA Titer: 1:62500; Positive Control:
ACHN cell lysate