

## Product datasheet for **TA344384**

### Stra8 Rabbit Polyclonal Antibody

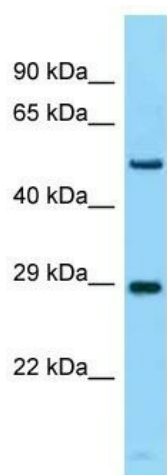
#### Product data:

Product Type:	Primary Antibodies
Applications:	WB
Recommended Dilution:	WB
Reactivity:	Mouse
Host:	Rabbit
Isotype:	IgG
Clonality:	Polyclonal
Immunogen:	The immunogen for Anti-Stra8 antibody is: synthetic peptide directed towards the N-terminal region of Mouse Stra8. Synthetic peptide located within the following region: WFPSEAVGPDAAEEEGEEEGEEEGEEEGEEEGDEEGEEEEENGEEREVEE
Formulation:	Liquid. Purified antibody supplied in 1x PBS buffer with 0.09% (w/v) sodium azide and 2% sucrose. <i>Note that this product is shipped as lyophilized powder to China customers.</i>
Purification:	Affinity Purified
Conjugation:	Unconjugated
Storage:	Store at -20°C as received.
Stability:	Stable for 12 months from date of receipt.
Predicted Protein Size:	31 kDa
Gene Name:	stimulated by retinoic acid gene 8
Database Link:	<a href="#">NP_033318</a> <a href="#">Entrez Gene 20899 Mouse</a> <a href="#">P70278</a>
Background:	The function of this protein remains unknown.
Synonyms:	STRA8
Note:	Immunogen Sequence Homology: Dog: 100%; Pig: 100%; Rat: 100%; Horse: 100%; Human: 100%; Mouse: 100%; Bovine: 100%; Rabbit: 100%; Guinea pig: 100%; Yeast: 91%; Zebrafish: 87%



[View online »](#)

## Product images:



Host: Rabbit  
Target Name: Stra8  
Sample Tissue: Mouse Thymus Lysate  
Antibody Dilution: 1.0 $\mu$ g/ml

Host: Rabbit; Target Name: Stra8; Sample Tissue:  
Mouse Thymus lysates; Antibody Dilution: 1.0  
ug/ml