

## Product datasheet for **TA344383**

### NAP1L4 Rabbit Polyclonal Antibody

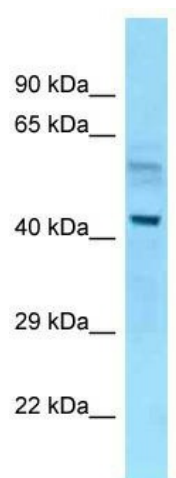
#### Product data:

Product Type:	Primary Antibodies
Applications:	WB
Recommended Dilution:	WB
Reactivity:	Mouse
Host:	Rabbit
Isotype:	IgG
Clonality:	Polyclonal
Immunogen:	The immunogen for Anti-Nap1l4 antibody is: synthetic peptide directed towards the N-terminal region of Nap1l4. Synthetic peptide located within the following region: HDLERKYAALYQPLFDKRREFITGDVEPTDAESAWHSENEEEDKLAGDMK
Formulation:	Liquid. Purified antibody supplied in 1x PBS buffer with 0.09% (w/v) sodium azide and 2% sucrose. <i>Note that this product is shipped as lyophilized powder to China customers.</i>
Purification:	Affinity Purified
Conjugation:	Unconjugated
Storage:	Store at -20°C as received.
Stability:	Stable for 12 months from date of receipt.
Predicted Protein Size:	43 kDa
Gene Name:	nucleosome assembly protein 1 like 4
Database Link:	<a href="#">NP_005960</a> <a href="#">Entrez Gene 17955 Mouse</a> <a href="#">Q99733</a>
Background:	The function of this protein remains unknown.
Synonyms:	hNAP2; NAP1L4b; NAP2; NAP2L
Note:	Immunogen Sequence Homology: Dog: 100%; Pig: 100%; Rat: 100%; Horse: 100%; Human: 100%; Mouse: 100%; Bovine: 100%; Rabbit: 100%; Guinea pig: 100%; Zebrafish: 79%



[View online »](#)

## Product images:



WB Suggested Anti-Nap1l4 Antibody; Titration:  
1.0 ug/ml; Positive Control: Mouse Liver