

Product datasheet for **TA344380**

POT1 Rabbit Polyclonal Antibody

Product data:

| | |
|-------------------------|--|
| Product Type: | Primary Antibodies |
| Applications: | WB |
| Recommended Dilution: | WB |
| Reactivity: | Human |
| Host: | Rabbit |
| Isotype: | IgG |
| Clonality: | Polyclonal |
| Immunogen: | The immunogen for anti-POT1 antibody: synthetic peptide directed towards the middle region of human POT1. Synthetic peptide located within the following region: MNSNQTMLSLFHLHGGTSYGRGIRVLPESNSDVDQLKKDLESANLTAN |
| Formulation: | Liquid. Purified antibody supplied in 1x PBS buffer with 0.09% (w/v) sodium azide and 2% sucrose. <i>Note that this product is shipped as lyophilized powder to China customers.</i> |
| Purification: | Affinity Purified |
| Conjugation: | Unconjugated |
| Storage: | Store at -20°C as received. |
| Stability: | Stable for 12 months from date of receipt. |
| Predicted Protein Size: | 70 kDa |
| Gene Name: | protection of telomeres 1 |
| Database Link: | NP_056265 Entrez Gene 25913 Human Q9NUX5 |



[View online »](#)

Background:

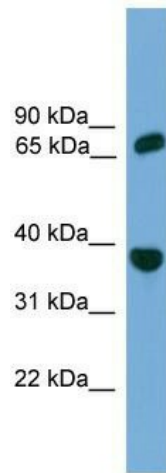
This gene is a member of the telombin family and encodes a nuclear protein involved in telomere maintenance. Specifically, this protein functions as a member of a multi-protein complex that binds to the TTAGGG repeats of telomeres, regulating telomere length and protecting chromosome ends from illegitimate recombination, catastrophic chromosome instability, and abnormal chromosome segregation. Increased transcriptional expression of this gene is associated with stomach carcinogenesis and its progression. Alternatively spliced transcript variants have been described.

Synonyms:

CMM10; GLM9; HPOT1

Note:

Immunogen Sequence Homology: Human: 100%; Zebrafish: 100%; Dog: 93%; Pig: 93%; Rat: 93%; Horse: 93%; Rabbit: 93%; Mouse: 86%; Bovine: 86%; Guinea pig: 86%

Product images:

WB Suggested Anti-POT1 Antibody Titration: 0.2-1 ug/ml; ELISA Titer: 1:1562500; Positive Control: THP-1 cell lysate